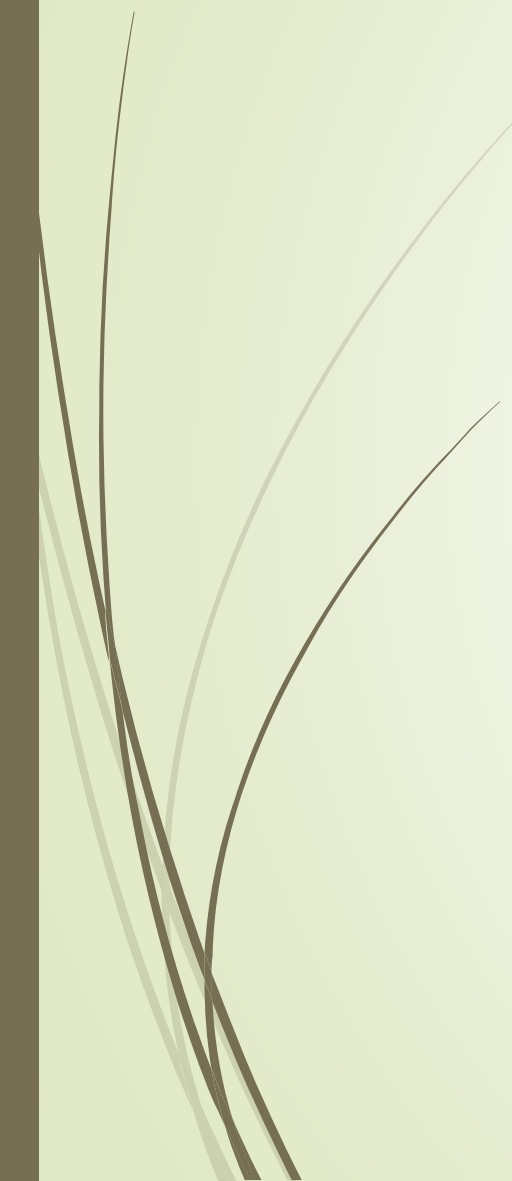


The Natural Environment and BASP

15th September 2016 presented by Chris Rose



Outline

- BASP and the environment (p 3-6)
 - Natural Basingstoke (p 7-8)
 - The environmental issues (p 9-11)
 - Conclusion
- 



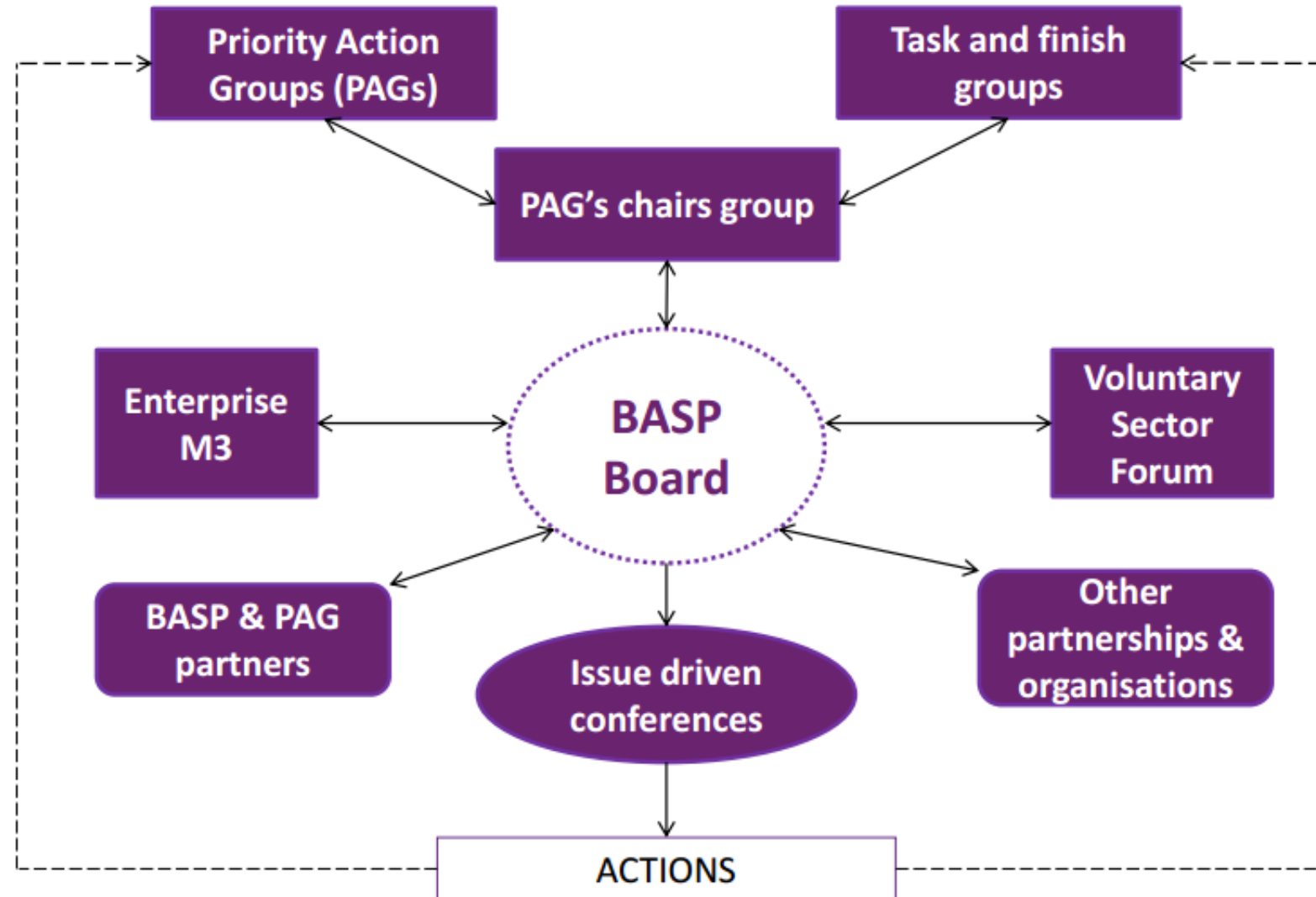
BASP Shared Vision part three

environmentally responsible and distinctive – where

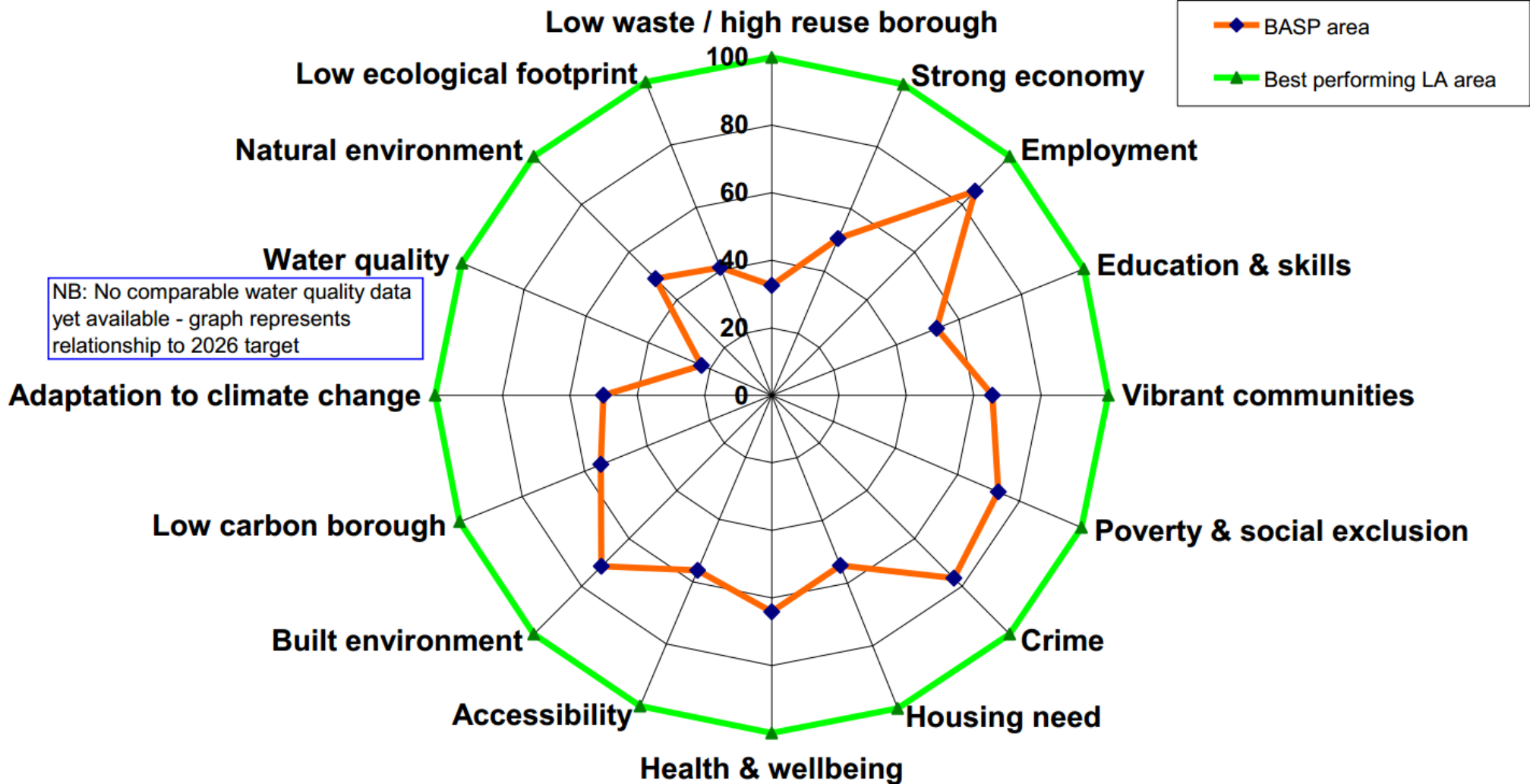
- we live and work in harmony with the natural elements and systems on which we depend, and are responding to the challenge of climate change
- the local built and natural environments are in tune and continue to provide opportunities for the economy and people's enjoyment; they are well managed to provide for the future
- we enrich the different characters of and links between towns, villages and the countryside, in the way we plan, such as the North Wessex Downs Area of Outstanding Natural Beauty and the River Loddon area
- we insist on the highest quality design and environmental standards to demonstrate pride in our place.

2011

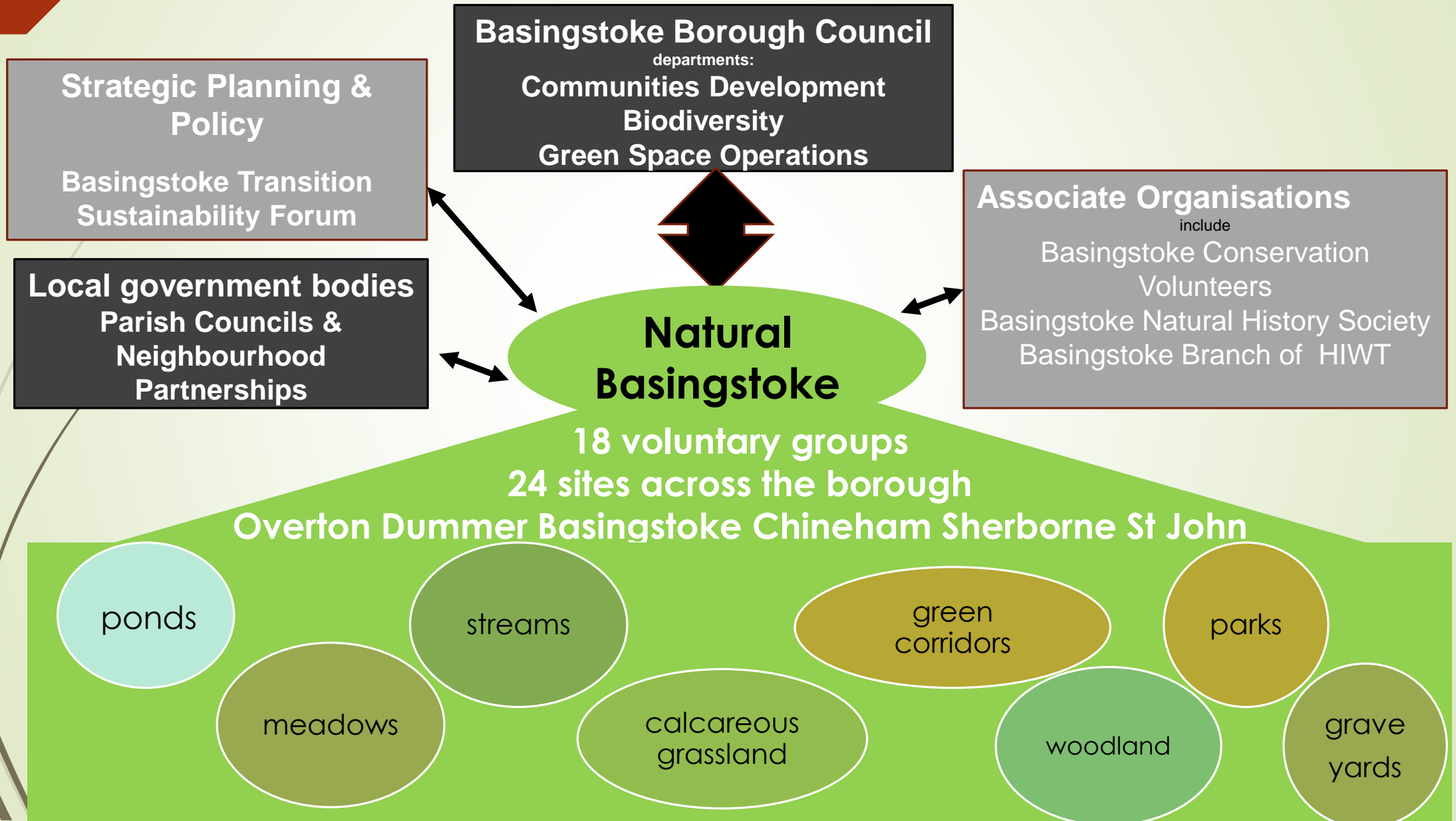




Basingstoke Area Strategic Partnership Sustainable Communities Footprint in relation to other L A Areas



Natural Basingstoke – where we fit in





What we are doing

On our sites

Planting

Path clearing

Monitoring and
litter picking

Coppicing

Species
recording

In the community

Cubs brownies
and schools

Love Parks week

Green week

Bioblitz

Wider
engagement

Community
payback

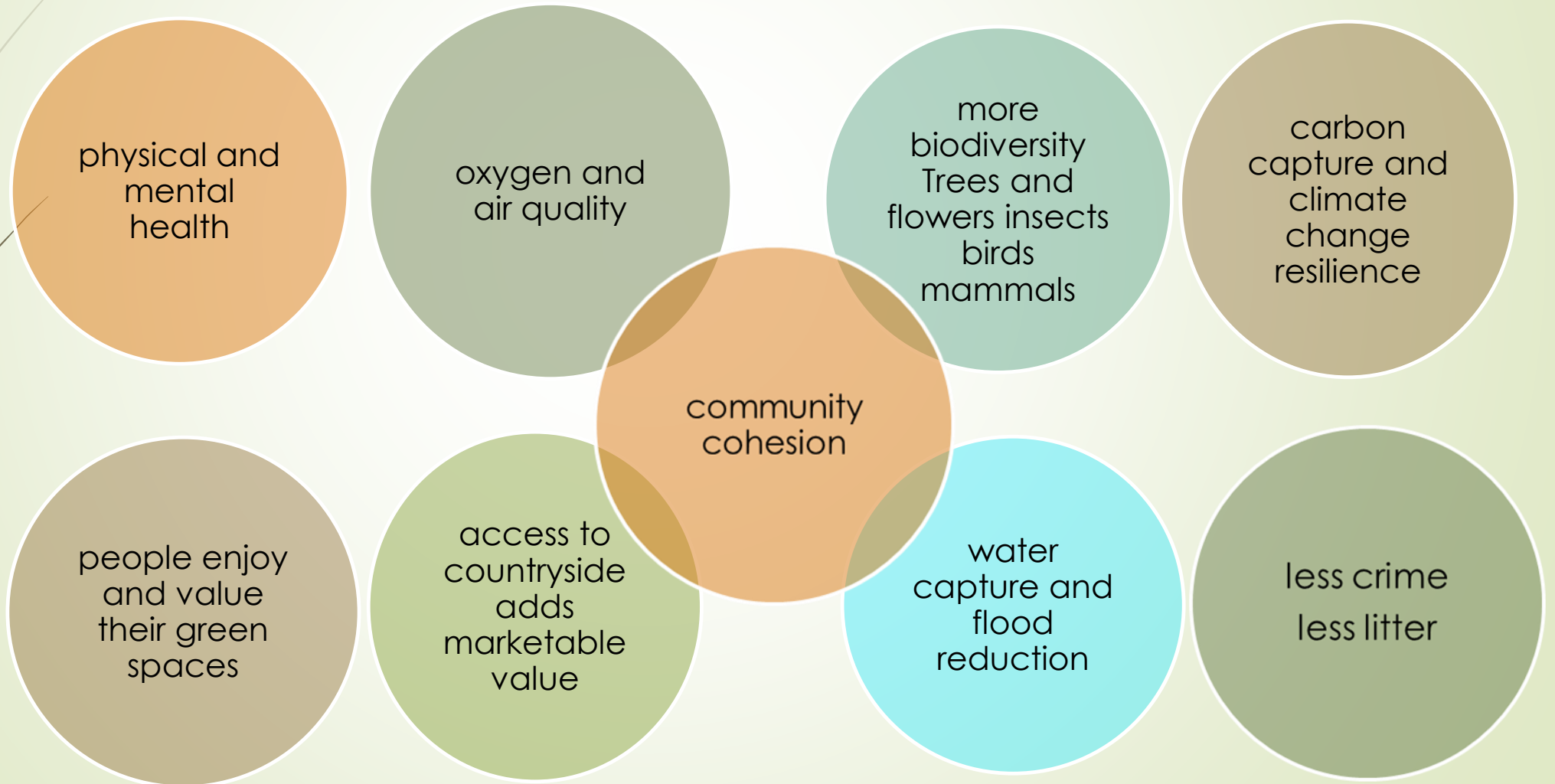
Management
planning

Local planning
issues

Green
infrastructure



The value of good quality natural environment





Issues identified by the sustainable communities footprint



Low carbon



Climate change



Water quality



Natural Environment

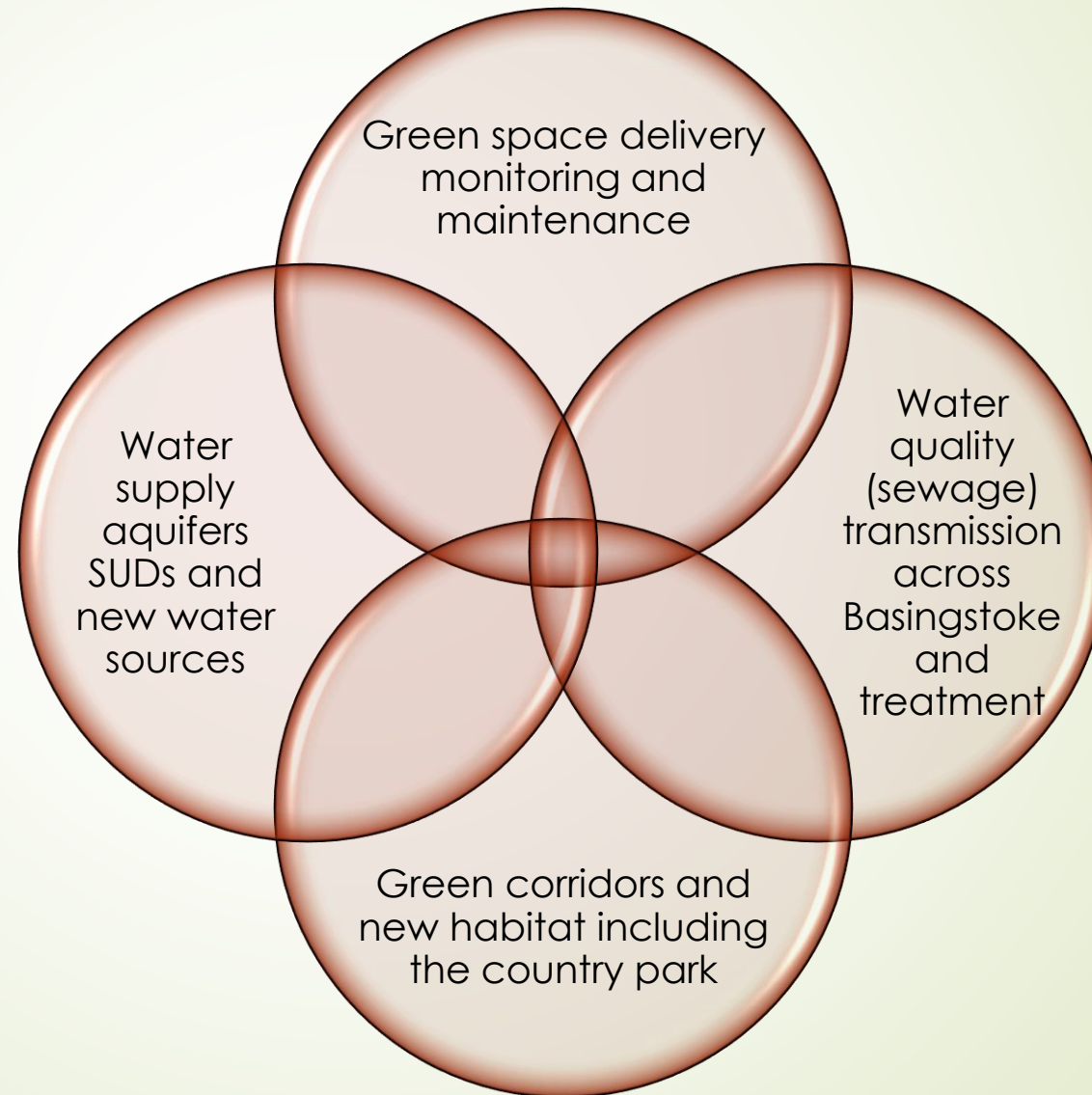


Ecological footprint



Low waste/
high re use

Environmental issues arising from Local Plan





Conclusion

- ▶ BASP should have an environmental voice
- ▶ Local Nature Partnership Hampshire and Isle of Wight – not active since July 2014
- ▶ Natural Environment Forum – no longer meets
- ▶ Natural Basingstoke – active , with local knowledge and some wider expertise. With representatives from a variety of communities

- ▶ Do the issues highlighted here fall within the remit of BASP?
- ▶ What can we do to help?