

BURGHCLERE PARISH NEIGHBOURHOOD PLAN

2011 – 2029

As Modified March 2023

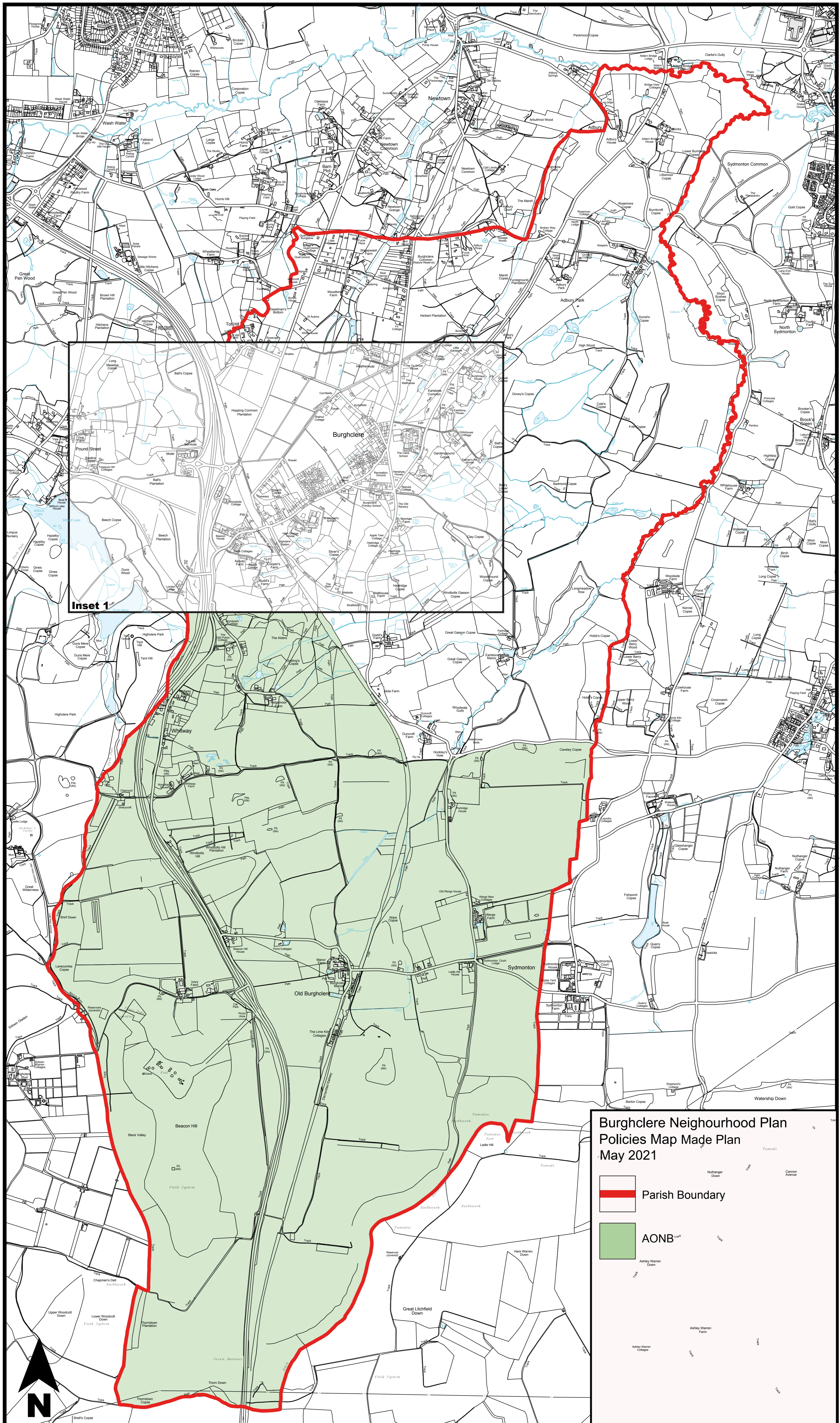


© Richard Carrow

POLICY MAP BOOKLET



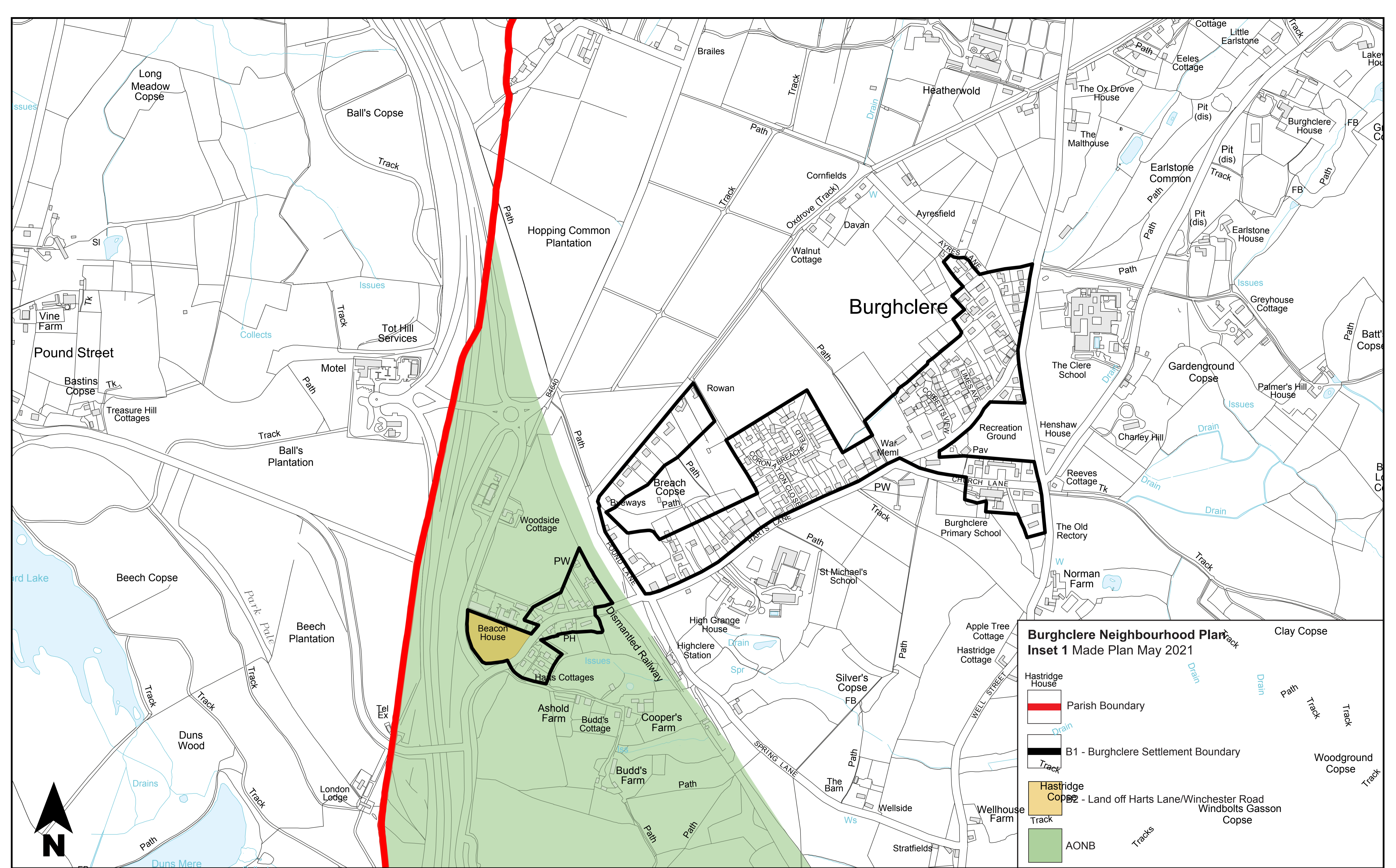
Courtesy of Lottie Baker, Burghclere Primary School




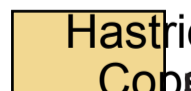
Inset 1

**Burghclere Neighbourhood Plan
Policies Map Made Plan
May 2021**

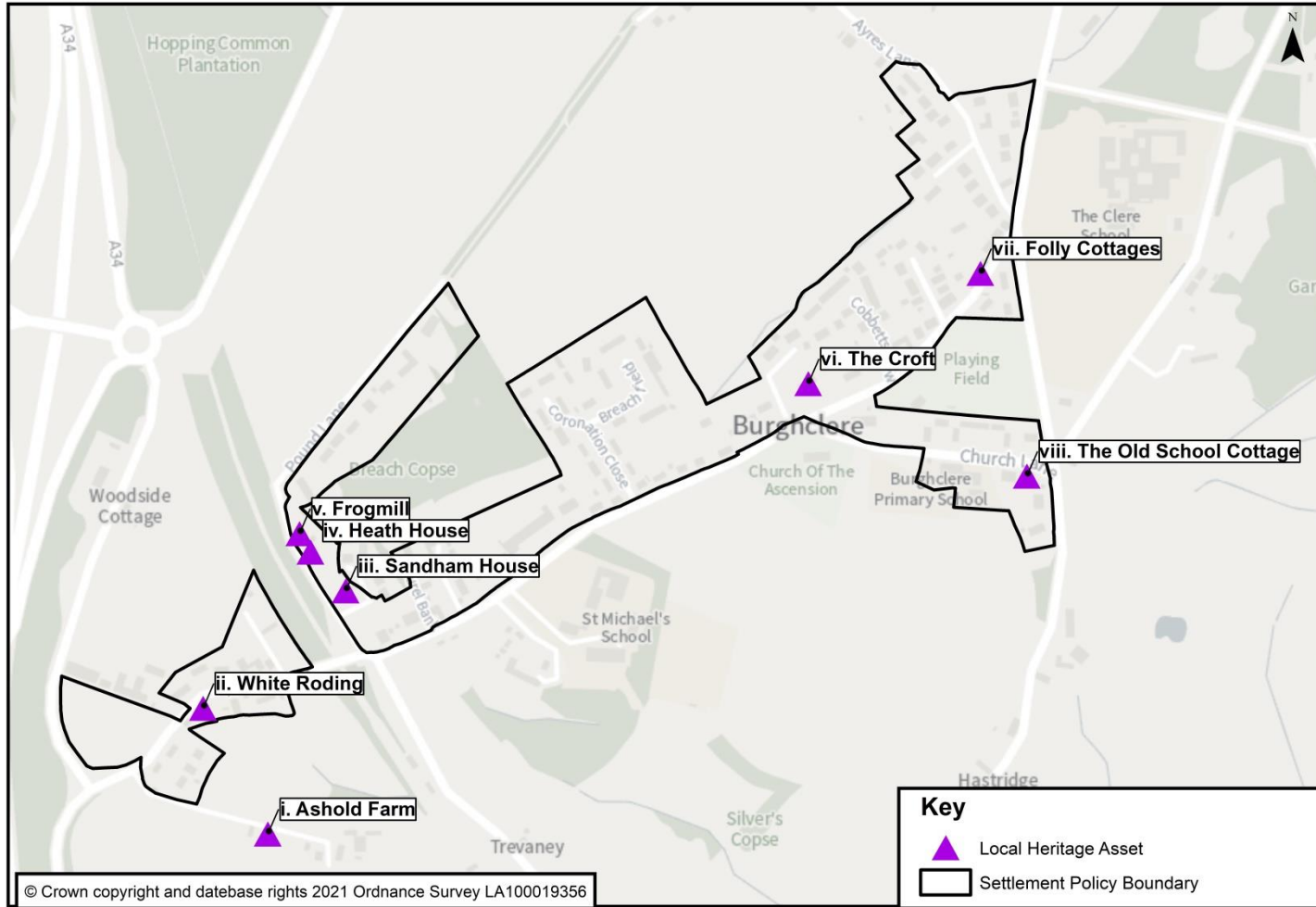
- Parish Boundary
- AONB



Burghclere Neighbourhood Plan
Inset 1 Made Plan May 2021

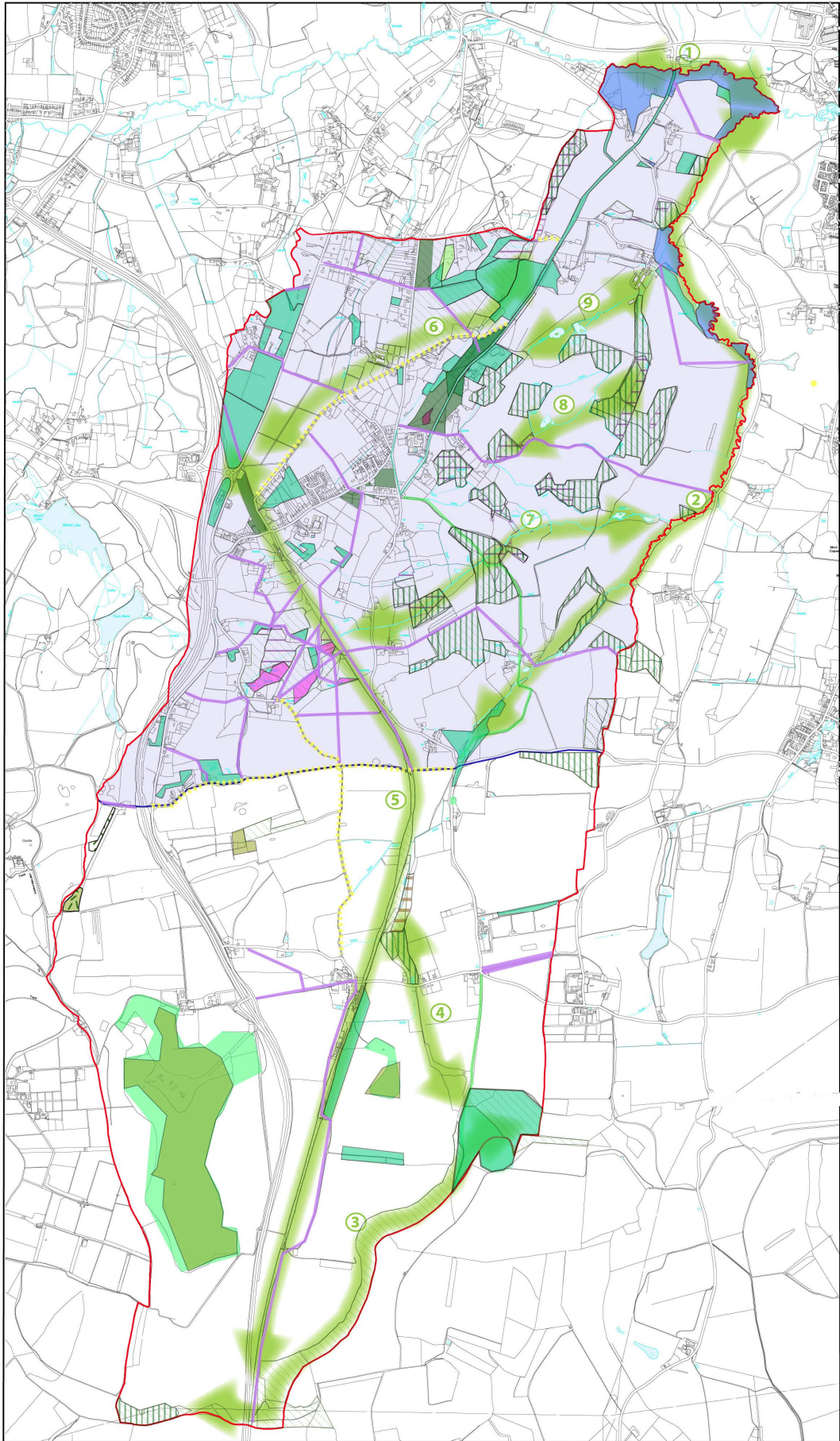
-  Parish Boundary
-  B1 - Burghclere Settlement Boundary
-  B2 - Land off Harts Lane/Winchester Road
-  AONB

INSET MAP 2



Burghclere Village Local Heritage Assets

Burghclere Neighbourhood Plan Green and Blue Infrastructure Network



Parish Boundary

Statutory Designations

Site of Special Scientific Interest

Other Designations

Sites of Importance for Nature Conservation

Priority Habitats

Woodland

Ancient and semi-natural

Ancient replanted

Lowland Mixed Deciduous Woodland

Wet Woodland

Woodpasture and Parkland BAP

Grassland

Lowland Dry Acid Grassland

Coastal and floodplain grazing marsh

Purple Moor Grass and Rush Pastures

Lowland calcareous

Heathland

Lowland Heathland

Other Important Assets

Streams and Ponds

Multi-functional green space

Movement

Public Rights of Way - Footpath

Public Rights of Way - Bridleway

Byway open to all traffic

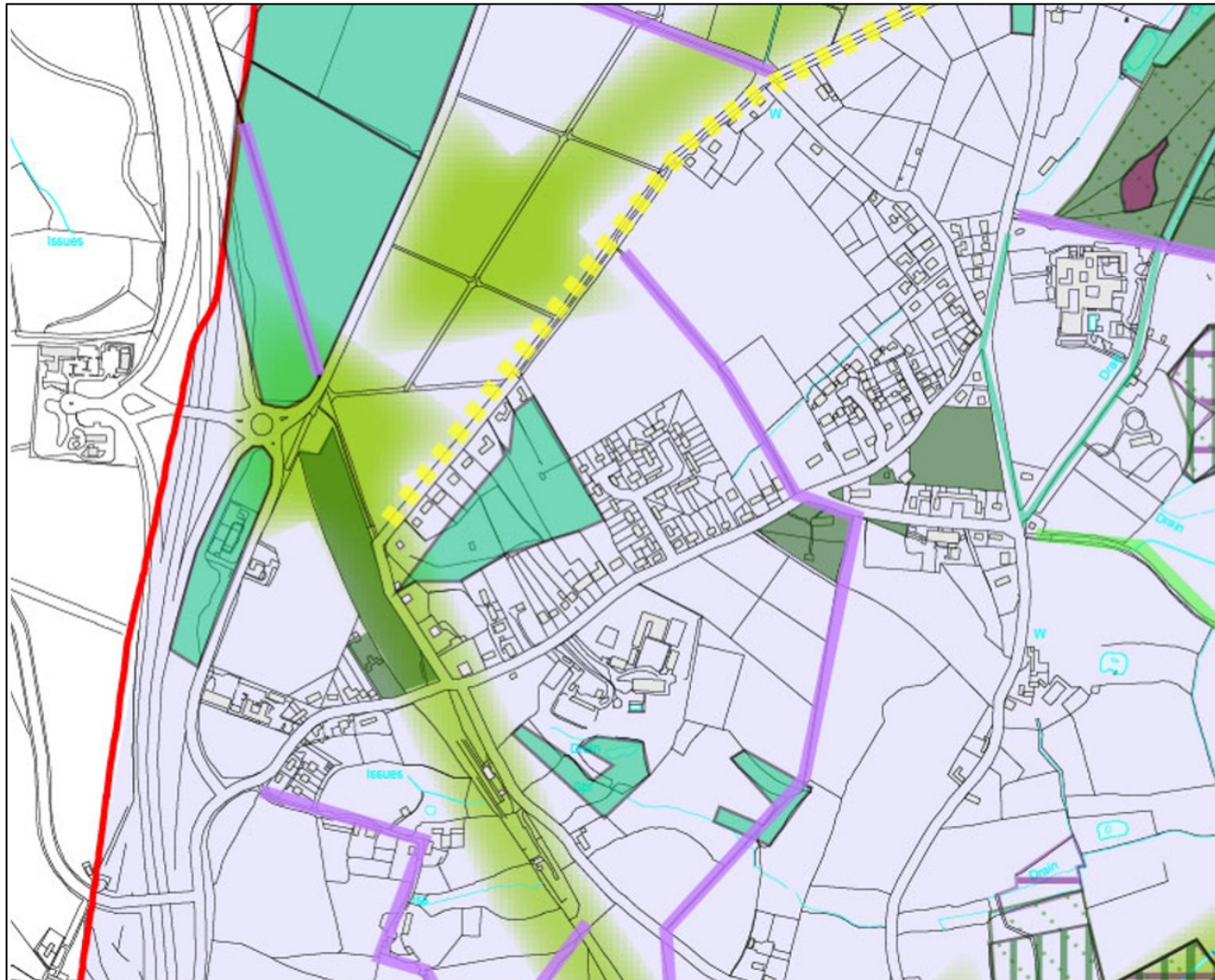
Enhancement Opportunities

East Woodhay Biodiversity Opportunity Area

Indicative Green Corridors

1. Enborne River (E6)
2. Burghclere Brook - Hockleys Hole to Enborne (E2)
3. Ladle Hill, Great Litchfield Down to Thorndown Copse (E9)
4. Ladle Hill to Ware Copse
5. Disused Railway Line
6. Highclere Park, Herbert Plantation to Crambow Gulley
7. Ridgemoor Farm to Burghclere Brook
8. Batts Copse to Frith Copse & Durrel's Copse
9. Herbert Plantation to Burghclere Brook

(E#) Connects with Ecchinswell Neighbourhood Plan Green Corridors



Ordnance Survey, (c) Crown Copyright 2018. All rights reserved. Licence number 100022432

Plan M: Burghclere Village Green and Blue Infrastructure Network Policy Map Inset