



# An assessment of the accommodation needs of gypsies, travellers and travelling showpeople within the Borough of Basingstoke and Deane.

July 2012



*Basingstoke  
and Deane*



# Contents

1.0	Introduction	4
	The Topic	4
	Aims and Objectives	4
	Legislative and Policy Context	5
2.0	Methodology	13
	Response Rate	14
3.0	Traveller Population	16
4.0	Site Accommodation	17
5.0	Travelling Patterns	24
6.0	Questionnaire Findings	24
	Members of the household	25
	Travel	25
	Household Formation	26
7.0	Travelling Showpeople Accommodation Need	27
8.0	Gypsy and Traveller Accommodation Need	28
9.0	Conclusions	33
	Accommodation Needs Assessment	33
	Appendices	
	References	
	Glossary	

## List of Tables

<b>Table 1:</b>	Authorised Sites - Travelling Showpeople	17
<b>Table 2:</b>	Authorised Sites – Gypsies and Travellers	18
<b>Table 3:</b>	Unauthorised Developments	19
<b>Table 4:</b>	Overall Capacity of Gypsy and Traveller Sites	19
<b>Table 5:</b>	Unauthorised Encampments Jan 2011 - Dec 2011	21

## List of Figures

<b>Figure 1:</b>	Repeating Households on Unauthorised Encampments	23
<b>Figure 2:</b>	No. of Unauthorised Encampments Jan 11 - Dec 12	23

## Appendices

<b>Appendix 1:</b>	Map 1 Gypsy, Traveller and Travelling Show people Site Accommodation within the Local Area	
<b>Appendix 2:</b>	Results from Questionnaires	
<b>Appendix 3:</b>	Copies of Questionnaires	

## 1.0 Introduction

### The Topic

1.1 This Assessment seeks to quantify the accommodation needs of Gypsies, Travellers, and Travelling Showpeople within the borough of Basingstoke and Deane over the next five years 2012-2017. The findings of this report will be used to inform decision making and comprise part of the evidence base for the Local Development Framework (LDF).

1.2 Nationally there is a mismatch in supply and demand of suitable site accommodation as a result of a lack of new provision, the gradual erosion of traditional 'stopping places' and population growth amongst all travelling communities. As accommodation choices for travellers have become increasingly constrained the number of unauthorised encampments and unauthorised private sites has risen and remains a problem. This has been identified by the Government as a particular source of tension between the travelling communities and the settled population. Furthermore, the financial implications for local authorities managing and dealing with unauthorised encampments have also been highlighted.

1.3 Accommodation assessments were carried out on a county wide basis for Gypsies and Travellers in 2007 and Travelling Showmen in 2008. Recommendations were made about future provision but the same issues remain of concern for both the travelling and settled communities.

1.4 In March 2012 a national Planning Policy for Traveller Sites was published in conjunction with National Planning Policy Framework (NPPF). The Government's aim for this new policy document is to ensure fair and equal treatment for travellers, in a way that facilitates the traditional and nomadic way of life of travellers while respecting the interests of the settled community.

1.5 This Assessment is therefore an important exercise in meeting the Government's overall aim and to ensure that the needs of the travelling communities are fully understood within the borough.

### Aims and Objectives

1.6 The primary aim of the Assessment is to establish the accommodation needs of travellers within the borough (n.b. for the purpose of this report, traveller means Gypsies, Travellers and Travelling Showpeople). This Assessment draws together information gathered from intelligence that the council and its partners have as well as an understanding of the needs of the local Gypsy, Traveller and Travelling Showpeople, and those who travel through the borough. It recommends the number of additional pitches that will be required on the basis of this local need over the next five year period up to 2017. A pitch is sufficient for one Gypsy or Traveller residential household or one travelling showperson household and business space (also referred to as a yard).

1.7 Similar to the settled community travellers need somewhere to live but as outlined within the Government's guidance on accommodation needs assessments, their needs are set within a different context as a result of their way of life and origin. Examples of accommodation need within this context could include the following scenarios:

- Those who have no authorised site anywhere on which to reside;
- Those whose existing site accommodation is overcrowded or unsuitable, but who are unable to obtain larger or more suitable accommodation;
- Those suppressed households who are unable to set up separate family units and who are unable to access a place on an authorised site, or obtain or afford land to develop one.
- Travellers who live in bricks and mortar whose existing accommodation is overcrowded or unsuitable.

1.8 To determine the level of need amongst the local traveller communities, the Assessment considers:

- The number of traveller households in the borough that have, or are likely to have an accommodation need, to be addressed, either now or within the next 5 years;
- A broad indication of where in the borough the demand for additional pitches is most likely to be;
- The level and type of current unauthorised development which, if planning permission is not granted is likely to increase the need;
- The intention of households to move (which may free up site capacity);
- The likely rate of household formation and annual population increase and;
- Travelling patterns within the borough and in and out of the surrounding area.

1.9 To achieve these aims the Assessment draws on a number of sources including:

- Review of secondary information, including a literature review and secondary data analysis, including information from education services, housing and planning;
- Review of authorised sites and unauthorised developments and encampments within the borough;
- The review of the location of authorised sites outside the borough within the immediate surrounding area;
- Information gained from the survey of travellers living on all types of site within the borough during 2011 to examine their accommodation needs.

## Legislative and Policy Context

1.10 The following review of the relevant policy and legislation is not exhaustive, but it does provide a context for understanding some of the issues facing the traveller communities and local authorities today.

## Defining Gypsies, Travellers and Travelling Showpeople

1.11 For the purpose of this report, when described collectively 'Gypsies, Travellers and Travelling Showpeople' will be referred as 'travellers'. This approach is consistent with the Planning Policy for Travellers (2012) and is therefore considered appropriate for this report.

1.12 It is however important to understand that there are distinct differences in the culture and way of life of Gypsies and Travellers; and Travelling Showpeople. For instance whilst Travelling Showpeople have a travelling way of life they do not generally share the same culture or traditions as Gypsies and Travellers and their sites are normally for mixed residential and business use, to enable the effective storage and repair of significant amounts of equipment.

1.13 For this reason The Planning Policy for Travellers (2012) provides two separate definitions:

### Gypsies and Travellers means:

*Persons of nomadic habit of life whatever their race or origin, including such persons who on grounds only of their own or their family's or dependants' educational or health needs or old age have ceased to travel temporarily or permanently, but excluding members of an organised group of travelling showpeople or circus travelling together as such.*

### Travelling showpeople means:

*Members of a group organised for the purposes of holding fairs, circuses or shows (whether or not travelling together as such). This includes such persons who on the grounds of their own or their family's or dependants' more localised pattern of trading, educational or health needs or old age have ceased to travel temporarily or permanently, but excludes Gypsies and Travellers as defined above.*

1.14 Section 225 of the Housing Act 2004 provides a statutory requirement for Local Authorities to carry out periodic reviews of the accommodation needs of Gypsies, Traveller and Travelling Showpeople. For the purpose of an accommodation needs assessment The Housing (Assessment of Accommodation Needs) (Meaning of Gypsies and Travellers) (England) Regulations 2006 provides a broader definition of 'Gypsies and Travellers' to include 'Travelling Showpeople':

- (a) persons with a cultural tradition of nomadism or of living in a caravan; and
- (b) all other persons of a nomadic habit of life, whatever their race or origin, including
  - I. such persons who, on grounds only of their own or their family's or dependant's educational or health needs or old age, have ceased to travel temporarily or permanently; and
  - II. members of an organised group of travelling showpeople or circus people (whether or not travelling together as such).

1.15 This definition therefore covers all those whose distinctive ethnicity, cultural background and/or lifestyle may give rise to specific accommodation needs (DCLG, 2007).

### The provision of accommodation

1.16 One of the most significant historical developments in terms of site provision for Gypsies and Travellers was the introduction of Part 2 of the 1968 Caravan Sites Act, which placed a requirement on local authorities to provide sites for local Gypsies 'residing and resorting to their areas'. However this Act also gave local authorities the right to request 'designation' which could have effectively created 'no go' areas for travellers.

1.17 The 1968 Act was repealed in 1994 with the introduction of the Criminal Justice and Public Order Act (CJPOA) which removed the obligation for local authorities to provide sites for Gypsies and Travellers. It also strengthened the law relating to trespass. In addition, the Act also repealed Section 70 of the Local Government, Planning and Land Act 1980, which gave powers to central government to meet the capital costs of the development of sites. Although local authorities still had powers to provide caravan sites for Gypsies and Travellers under Section 20 of the 1960 Caravan Sites and Control of Development Act, there was no longer a legislative obligation to do so and as such, few chose this option.

1.18 The result of the CJPOA was to effectively criminalise the Gypsy and Traveller population, shifting responsibility from local authorities to the Gypsy and Traveller communities who effectively were expected to provide for their own private sites, usually involving the purchase of land and the subsequent applications for retrospective permission. Despite the publication of Circular 1/94 Gypsy Sites and Planning, which set out planning policy in relation to site provision and encouraged local authorities to assess the need for accommodation and identify suitable sites, the Circular was ineffective and the majority of Gypsy and Traveller planning applications were unsuccessful.

1.19 Circular 1/94 was replaced in 2006 with Circular 01/2006: Planning for Gypsy and Traveller Caravan Sites, following the introduction of the Planning and Compulsory Purchase Act in 2004. The aims of the document included:

- Ensuring the Gypsies and Travellers have fair access to suitable accommodation, education, health and welfare provision
- Reducing the number of unauthorised encampments and developments
- Increasing the number of sites and addressing under provision
- Protection of the traditional travelling way of life for Gypsies and Travellers
- Underlining the importance of assessing accommodation need at different geographical scales.

1.20 Similar goals were sought with the creation of Circular 04/2007: Planning for Travelling Showpeople.

1.21 The Circulars required the number of pitches in Regional Spatial Strategies (RSSs) (see paragraph 1.43) to be translated into Development Plan Documents, requiring local authorities to identify land for sites based upon the number of pitches outlined in RSSs.

1.22 However, in May 2010 the Government announced its intention to revoke Regional Spatial Strategies, effectively removing regional planning and its role providing an overview of site provision at a regional level. Following this, in August 2010, the Government also announced its intention to revoke Circular 01/06 and Circular 04/2007 and replace these documents with a new Planning Policy Statement (PPS): Planning for Traveller Sites.

1.23 In March 2012 the National Planning Policy Framework (2012) NPPF was published cancelling all PPSs. In conjunction with the NPPF the Planning Policy for Traveller Sites (2012) was also published which cancelled both Circular 01/06 and Circular 04/2007.

1.24 The Planning Policy for Traveller Sites (2012) advocates that local planning authorities should make their own assessment and to set their own targets for pitch provision, based on robust evidence of local need. The document sets out following aims of the Government:

- that local planning authorities should make their own assessment of need for the purposes of planning
- to ensure that local planning authorities, working collaboratively, develop fair and effective strategies to meet need through the identification of land for sites
- to encourage local planning authorities to plan for sites over a reasonable timescale
- that plan-making and decision-taking should protect Green Belt from inappropriate development
- to promote more private traveller site provision while recognising that there will always be those travellers who cannot provide their own sites
- that plan-making and decision-taking should aim to reduce the number of unauthorised developments and encampments and make enforcement more effective
- for local planning authorities to ensure that their Local Plan includes fair, realistic and inclusive policies
- to increase the number of traveller sites in appropriate locations with planning permission, to address under provision and maintain an appropriate level of supply
- to reduce tensions between settled and traveller communities in plan-making and planning decisions
- to enable provision of suitable accommodation from which travellers can access education, health, welfare and employment infrastructure
- for local planning authorities to have due regard to the protection of local amenity and local environment.

It also explains that local planning authorities should identify and update annually a five year supply of specific deliverable traveller sites and identify developable sites or broad locations for growth for 6-10 years. In the event the LPA cannot demonstrate an up-to-five year supply of deliverable sites the Policy Documents explains that this should be a significant material consideration in determining planning applications. This particular part of the Policy will come into force in March 2013.

1.25 The findings of this Assessment would therefore inform the council's search for deliverable sites as required by national policy.

## Local Decisions

1.26 Following a number of single issue scrutiny sessions at various Community Wellbeing Overview and Scrutiny meetings at the borough council in 2010, a Portfolio Holder Executive Decision was made to update general council policy and procedures relating to unauthorised encampments. It was determined that: The council will not tolerate unauthorised encampments on borough council land unless there is an identified welfare or legal need to do so.

The council will continue to use powers under the Criminal Justice and Public Order Act 1994 (CJPOA) to remove unauthorised encampments.

Communication around unauthorised encampments by the council is improved, including information on the council's website, and better use is made of community newsletters and leaflets to provide information.

A memorandum of understanding is developed between the police and the council to agree the roles both play when addressing unauthorised encampments.

A service level agreement is developed between the legal sections of the borough council and Hampshire County Council to enable BDBC to attend court on the county council's behalf to speed up the county's eviction process within this borough.

The Council will make effective use of existing budgets to ensure that robust measures are put in place to prevent unauthorised entry at identified vulnerable locations.

The council will continue to provide bin bags to unauthorised campers and advise them of a suitable location to store the bags. The Traveller Liaison Officer will assess the need for refuse collection at each site and, when appropriate, make the necessary arrangements for the early cleaning of the site based on a comprehensive risk assessment.

The development of a transit site within the borough should not be progressed at this time because the evidence obtained during the scrutiny did not demonstrate that it would prevent unauthorised encampments. If other councils in the south east establish a network of transit sites, and government funding becomes available again for the provision of transit sites, the situation should be reviewed.

The updated policy for the Removal of Unauthorised Encampments is adopted.

## The Development Plan

1.27 The development plan is formed of the National Planning Policy Framework (2012), Planning Policy for Traveller Sites (2012) and the Saved Policies of the adopted Basingstoke and Deane Borough Local Plan 1996 – 2011. Once publicised the findings of this accommodation assessment will support the decision making function of the Local Planning Authority. The following local policies are relevant.

1.28 The current saved policy of the Basingstoke and Deane Borough council Local Plan 1996–2011 Policy C5 Gypsy Sites/Travelling Showpeople states:

*‘Provision of formal accommodation for Gypsies will be permitted provided that:*

The site is capable of being provided with the appropriate essential services and is within a reasonable distance of community and other facilities: and  
The site will not adversely affect the amenity of adjoining users where the site is capable of including an element of business activity

### **There is an identified need for the development**

*Permanent sites for Travelling Showpeople will be considered as exceptions to other Local Plan policies. Applicants will be requested to demonstrate to the satisfaction of the Borough Council that, in addition to the above, there are no environmental effects or conflicts with public health, safety and the provision of public services.’*

### **Draft Local Policy**

1.29 The council is in the process of preparing a Core Strategy Development Plan Document which will contain a policy and allocation approach for Traveller site provision.

1.30 The most recent Gypsy and Traveller Accommodation Assessment (GTAA) which included an assessment of the need within the borough was the Hampshire and Isle of Wight GTAA 2007. The study was carried out by David Couttie Associates (DCA).

1.31 The methodology adopted for the study included:

- Secondary data analysis
- A specialist survey of Gypsies and Traveller households
- Stakeholder engagement

1.32 The GTAA recommended for 2006-2011 the provision of 44 new pitches, of which 9 would be in the North Area, with 3 in the borough of Basingstoke and Deane. It also recommended the development of 4 managed transit sites to accommodate 41 households per year (including 1 transit site in Basingstoke and Deane) by 2011.

#### *Travelling Showpeople Accommodation Assessment (TSAA March 2008)*

1.33 The most recent Travelling Showpeople Accommodation Assessment (TSAA) was a county wide assessment.

1.34 The methodology for the study was adapted to that used for the HIWGTAA 2007. For instance changes were made to the survey questionnaire excluding questions that were not appropriate to the showpeople population and include issues that were relevant (e.g. the storage of fairground equipment).

1.35 The survey showed there were an estimated 65 travelling show people's yards on 28 sites across Hampshire. These yards were the home and business base to approximately 174 households. There was 1 yard in Basingstoke.

1.36 The study recommended that there was a need for 13 sites across the county equating to 111 accommodation units by 2011. A need to provide safe, accessible and affordable temporary sites (pull-ins) for Travelling Showpeople to stop at en route to show grounds, or during intervals in the touring calendar, to reduce the unnecessary return of whole Travelling Showpeople households and all their equipment to their main site was also identified.

1.37 The survey was accepted by all local authorities in Hampshire and meetings were held in 2008 to decide on local allocation of need but no conclusions were drawn.

### **Partial Review of the South East Plan**

1.38 A Single Issue Review on provision for travellers was undertaken to meet the requirements of Circulars 01/2006 and 04/2007 (both of which have since been cancelled by the Planning Policy for Traveller Sites (2012)). Following the proposed revocation of Regional Spatial Strategies in May 2010, work on the Partial Review ceased and remains unfinished. The draft report was however published after a Freedom of Information request and it outlined concerns regarding the soundness of the GTAAs throughout the South East of England.

1.39 The draft report noted that all but one local authority in the South East (Chichester DC) appointed external consultants to undertake their GTAA. It highlighted an apparent disconnect between those who went out to liaise directly with Gypsies and Travellers (professional interview companies) and those interpreting their findings (the consultants) and a further disconnection between the GTAA authors and their local authority clients.

1.40 It also emphasised that consultants had placed too much reliance on the government's bi-annual Caravan Count Data as the basis of key assumptions. This is because the Count is widely regarded as a less than robust source of evidence and only useful as an indicator of trends in the number of caravans over time.

1.41 It noted that many of the survey questionnaires were unnecessarily complex and poorly worded, with some consultants concluding that their questions did not provide clear findings, were too variable and resulted in some double counting.

1.42 The report also explained that the simplest GTAAs carried out at a local level were often the most robust. Those carried out by external consultants were considered to be over complex, adopting numerous complicated mathematical formulae, and made assumptions which bore little obvious relationship to the circumstances of gypsies and travellers and local conditions

1.43 The Partial Review also recommended a distribution of pitches and yards for every local authority within the South East. For Gypsy and Traveller pitches it recommended 8 new sites and for Travelling Showpeople 21 accommodation units within the borough of Basingstoke and Deane. The Partial Review explains that many local authorities refuted the recommended distribution of pitches at the Examination in Public.

1.44 Objections from local authorities included the fact that it was generated through a default distribution rather than being based on robust evidence which had been audited and benchmarked; that it was not based on sound evidence of local needs and that it unreasonably included need arising from other parts of the South East.

1.45 In particular, objections included the criticism that it did not take account of the current distribution of travelling showpeople sites within the county and the difficulties of transferring travelling showpeople to other areas, and assumed an untested level of political co-operation between local authorities, that it did not take into account local constraints to new site provision, whether through shortage of suitable developable land or environmental and planning constraints and sustainability issues.

1.46 However the Review Panel explained that the objections had to be seen in the context of the reluctance of the Hampshire local authorities to agree amongst themselves an alternative distribution of how to meet these locally arising needs for additional travelling showpeople plots.

1.47 The Review Panel noted that Hampshire is a large county with a long tradition of travelling showpeople: it is home to about a quarter of the travelling showpeople in South East Region but there has been little growth in the number of authorised plots for many years. It argued that the absolute numbers of need was not large and the doubling of provision across the county to provide for locally identified needs has to be seen in this context. It explained that while some travelling showpeople families may have to move to new sites, there seems no justification for imposing a county requirement figure lower than that identified in the Hampshire TSAA 2008, plus the assumed growth figure to 2016.

1.48 The Panel concluded that while the requirements presented challenges to delivery at a local level the absolute numbers in each case remained very small, in comparison with regional housing requirements. There was also the option for delivering of new plots through collaborative working between local authorities and with the travelling showpeople community.

1.49 The prospect of a requirement for 21 travelling showpeople accommodation units by 2016 in Basingstoke and Deane when at the time there was only one established yard (as recorded by the TSAA 2008) would have presented exceptional challenges for the borough.

1.50 The Partial Review is an unfinished document and will likely remain unfinished given the Government's intention to abolish the regional tier of governance. It cannot therefore be afforded weight in decision making. However its observations and comments over the adequacy of previous accommodation assessment have been taken on board during the process of this assessment.

## 2.0 Methodology

2.1 The findings presented in this report are derived from a number of research activities. The methodology has been carried out in line with the Department for Communities and Local Government's (DCLG) Gypsy and Traveller Accommodation Needs Assessments Guidance 2007.

2.2 The following processes were undertaken:

### Desktop review

2.3 A search of all traveller accommodation within the borough was carried out, including authorised sites where planning permission has been granted, unauthorised encampments and developments, as well as planning applications which have been refused permission, planning appeals and enforcement action since 2006 to link into the previous accommodations assessments. Information was also sourced from the council's Housing Team and the Hampshire Ethnic Minority and Traveller Achievement Service.

### Research by survey questionnaire

2.4 A working group comprising a range of senior council officers from multidisciplines, including housing, community liaison, planning and enforcement produced a questionnaire designed to gather data from traveller households residing within the borough on any authorised sites or unauthorised developments or encampments.

2.5 The questionnaires were intended to seek information on household composition and demography including patterns of extended family living, current tenure types, future needs including the expected rate of new household formation and to identify migration patterns and transient settlement patterns.

2.6 In the summer of 2011 the first questionnaire survey took place of those living in site accommodations and these continued through to the end of 2011 in order for any seasonal variations to be identified.

2.7 A questionnaire was also produced for those residing within bricks and mortar accommodation.

2.8 The questionnaires form part of the quantitative and qualitative assessment of traveller need in the borough. A copy of the questionnaires can be found at Appendix 3.

2.9 The aim was to achieve 100% survey coverage of households at authorised sites within the borough as well as those occupying any unauthorised encampments which occurred within the assessment period.

2.10 In order to provide an indication of the number of travellers in traditional 'bricks and mortar' all 27 housing associations within the borough were asked to complete a questionnaire, which can be viewed at Appendix 3.

2.11 Information was also provided by the council's Housing Services Team and the Hampshire Ethnic Minority and Traveller Achievement Service (EMTAS).

## Response Rate

Total number of full questionnaires completed = 12 respondents

No. of partially completed questionnaires = 4 respondents

Housing association responses: 7 respondents

### **Breakdown of respondents' location:**

Authorised developments occupied by travelling showpeople =1 respondent

Authorised developments occupied by gypsies or travellers: 2 respondents

Unauthorised developments/encampments = 7 respondents

Those residing in bricks and mortar with travelling origins/background = 2 respondents

2.12 40% of the authorised occupied pitches within the borough were surveyed. Some households were not contactable. One household did take the questionnaire to complete and return later, but this was never received. The intention was also to survey all known unauthorised development/encampments however the willingness to complete the survey varied between the households who were approached.

2.13 It has also been difficult to identify travellers residing within bricks and mortar accommodation as they are not always identified as a specific group within ethnic monitoring data which does not always seek information on travelling culture or family background.

2.14 Given the lack of specific data available in terms of the location of these particular households, the approach taken was to ask Gypsies and Travellers at the end of their interviews whether they know of any such households within the borough who may be willing to participate. Such a technique took advantage of the family and friendship networks within the local area. It allowed us to identify those who are hidden within bricks and mortar accommodation where stakeholders were unable to help with contacts.

2.15 However we found some obstacles with this approach, for instance one family said they would not pass on details as it was up to others to come forward if they wished to have a site, and in some instances details of how to participate would be taken from the Liaison Officer to be passed on to others but no further contact was made.

## Consultation

2.16 In March 2012 a copy of the draft Assessment went out for consultation for 21 days. The purpose of the consultation was to seek views from relevant bodies on the progress of the Assessment including its methodology, how the evidence was gathered and its recommendations. When in its final form the Assessment must be seen as a robust piece of evidence that can be relied upon to inform planning decisions and meet the needs of travelling communities. The views of others are therefore beneficial.

2.17 The following bodies were consulted:

- Irish Traveller Movement;
- Friends, families and Travellers;
- Traveller Law Reform;
- Gypsy Council, Hampshire Traveller Education Service,
- Central and Western Showmen Guilds,
- Ms Smith (Travelling Showpeople Analyst) and
- neighbouring Local Authorities including Hart District Council, Test Valley Borough Council, East Hampshire District Council, Winchester City Council, West Berkshire Council and Reading Borough Council.

2.18 Feedback was received from the Gypsy Council, Test Valley Borough Council and a Travelling Showperson specialist.

## 3.0 Traveller Population

3.1 The borough of Basingstoke and Deane covers an area of over 63,000 hectares (245 square miles) of north Hampshire, with Basingstoke Town being the main settlement in the borough and the focus for key services and employment. The town is surrounded by rural areas, including small towns and villages with over 75% of the land within the borough defined as agricultural or woodland. The population of the borough stands at around 167,000 as at June 2011.

3.2 Nationally and locally there is a general lack of reliable secondary data on the population of travellers. This is especially so for those who live in bricks and mortar accommodation because they are often not known to housing departments (since they are not usually included as a distinct ethnic category when collecting data) and, in any event, may not self-identify as a Gypsy or Traveller. It is also noted that travelling showpeople and some travellers are not part of an ethnic group and thus may not be able to ascribe their way of life on various applications forms / censuses etc

3.3 However, it is considered worthwhile to reflect on the information that is available to allow some sense for the likely scale of the traveller population within the borough. The following information is therefore considered relevant.

3.4 The borough currently has four occupied authorised gypsy and traveller sites (equating to five households) and one yard (see Glossary) for travelling showpeople (one household). See Section 4.

3.5 The local housing and education services have provided the following information for 2011:

- Only two applications were received for housing from people who ascribe as gypsies and travellers (Source: The council's housing team)
- No gypsies or travellers were housed by housing associations within the borough in the past year (Source: The council's housing team)
- Of the seven housing associations who responded to the questionnaire, five said they had no gypsy or traveller families occupying properties, whilst the remaining had three families between them.
- 53 pupils were identified as 'travellers' (which includes Gypsies, Travellers, showpeople, circus and new travellers) in 2011 within the borough and 37 of these pupils were identified as in bricks and mortar. (Source: The Hampshire Ethnic Minority and Traveller Achievement Service (EMTAS) Traveller Questionnaire 2011)

3.6 From the information available assumptions can be made regarding the traveller population within the borough. It is probable that travelling communities make up one of the smallest minority groups within the borough. Secondly on the basis of the information supplied by the EMTAS it is likely that most people who ascribe as travellers within the borough reside in bricks and mortar compared to those living on site accommodation.

## 4.0 Site Accommodation

### Local Authority Sites

4.1 There are no traveller sites managed by the council or Hampshire County Council within the borough. There was a site at Peak Copse to the south of Basingstoke near to the Junction 7 of the M3 motorway in 1992 which was owned and managed by Hampshire County Council.

4.2 However, following a number of violent disturbances the county council decided to temporarily close it in 1996. An unauthorised encampment then occupied the site in late 1996 which required Court action for repossession. Following the repossession of the site it was closed permanently because of the absence of any conclusive demand for re-opening as a permanent gypsy site. There are currently no plans to re-open the site.

4.3 Sites that are managed by other local authorities are located at Paices Hill, Aldermaston (39 pitches) and Four Houses Corner, Burghfield Common (18 pitches) in West Berkshire; Star Hill (20 pitches) and Penny Hill (20 pitches) near Hartley Witney in Hart District. All these sites are at full capacity and have a waiting list.

4.4 See Appendix 1 Map 1 for the location of these sites.

### Private Sites

#### Travelling Showpeople

4.5 There is only one private authorised Travelling Showpeople yard within the borough.

**Table 1: Authorised Sites - Travelling Showpeople**

Site Address	Year of Consent	Authorised Development	Conditions of Permission
North of Basingstoke Town <sup>1</sup>	2001	One pitch i.e. Change of use of land for siting of mobile home and for storage and maintenance of showman's equipment	Approved subject to a condition for the site to only be occupied by members of the Showmen's Guild of Great Britain and their families only.

4.6 There were no known unauthorised Travelling Showpeople developments within the borough at the time of writing of this report.

### Gypsies and Travellers

4.7 There were no private authorised pitches occupied by Gypsies or Travellers within the borough prior to 2006 and this is documented within the HIWGTA (2007).

<sup>1</sup> In the interests of privacy the specific site address of this site has not been disclosed

4.8 However, since 2006 planning permission has been granted for **five** permanent Gypsy and Traveller pitches on four sites within the borough. This figure exceeds the number of pitches recommended in the HIWGTA (2007) which stood at **three** pitches for the period 2006 - 2011. These permissions are documented in Table 2 below:

**Table 2: Authorised Sites – Gypsies and Travellers**

Planning Application Ref	Year of Consent	Site Address	Authorised Development	Conditions of Permission
BDB 62071	2006	Pamber Heath Tadley, RG26 3PA	Two pitches i.e. siting of 2 no. mobile homes and 2 no. touring caravans (retrospective)	Approved subject to personal condition to applicant and dependents
BDB 63111	2008	Pamber Heath Tadley, RG26 3PA	One pitch i.e. siting of 1 no. mobile homes and 1 no. touring caravans (retrospective)	Approved subject to personal condition to applicant and dependents
BDB 71415 (Appeal Ref APP/H1705/A/10/2123347)	2011	Salters Heath Road, Monk Sherborne	One pitch i.e. change of use of land for the siting of 1 no. mobile home and 1 no. touring caravan	Allowed on appeal subject to a condition for the site to only be occupied by Gypsies and Travellers as defined in paragraph 15 of Circular 1/2006
BDB 72823 (Appeal Ref APP/H1705/A/11/2148265)	2011	Bishops Green, Newbury, Berkshire, RG15 8JJ	One pitch i.e. change of use of land for the siting of 1 no. residential caravan	Allowed on appeal subject to a personal condition for 2 years, after which the site will be subject to a condition for the site to only be occupied by Gypsies and Travellers as defined in paragraph 15 of Circular 1/2006
		<b>Total Pitches</b>	<b>5</b>	

4.9 The **three** pitches at Pamber Heath were granted planning permission with personal conditions restricting occupation to named individuals and the council has

since granted retrospective permission BDB/71088 in 2009 for a variation to one of the personal conditions allowing a different family to occupy one of these sites.

4.10 **Two** pitches were allowed on appeal and these are located at Monk Sherborne and Bishops Green, both of which are subject to a more general condition which states that the sites can only be occupied by Gypsies and Travellers as defined in paragraph 15 of Circular 01/2006. However, conversely, a personal tie is in place for the first two years of occupation at the Bishops Green site.

### Planning Applications Pending

4.11 In addition an application has been submitted for two pitches near Whitchurch under BDB/75288. At the time of writing this application had not been determined and no one has moved on to the site.

### Known Unauthorised Developments

4.12 Table 3 documents the location of an unauthorised Gypsy and Traveller development (i.e. on private land owned by the occupants but without planning permission) which is known to the council's Enforcement and Compliance Team. The case was opened in 2008 and investigations are ongoing. An application for a Certificate of Lawful Use for this development has been submitted and is being determined by the Local Planning Authority at the time of writing.

**Table 3: Unauthorised Developments**

Location	No. of pitches	Time on land
Pamber Heath, Tadley	1	Enforcement case opened in 2008 and is under investigation. Unconfirmed reports indicate that the site was in existence prior to 2008. Now subject to Certificate of Lawful Use application.

### Overall Capacity of the Gypsy and Traveller Development

**Table 4: Overall Capacity of Gypsy and Traveller Sites**

Location	No. of Pitches	Availability
Local Authority Sites	0	0
Private Provision	5	0
Unauthorised	1	0
Total Combined	6	0

4.13 There are a total of **five** occupied authorised pitches for Gypsies and Travellers and **one** authorised yard for Travelling Showpeople within the borough. To put these numbers into context the HIWGTA 2007 indicated that there were 123 authorised Gypsy and Traveller sites or pitches within Hampshire, whilst the TSAA 2008 indicated that there were 65 yards in Hampshire. It is also likely that the number of authorised sites located within the rest of Hampshire has increased since the publication of these studies.

4.14 The number of authorised sites within the borough is therefore relatively low compared to the rest of Hampshire.

*Recorded Unauthorised Encampments Jan 11 -Dec 11*

4.15 Unauthorised Encampments are areas in which travellers occupy land without the benefit of planning permission. The land is likely to be owned by another party such as a council i.e. lay by, side of the roads and open spaces etc. Generally these encampments are moved on by the council and in some cases the police within days of their arrival.

4.16 The occurrence and location of these encampments is continually monitored by the council's Gypsy and Traveller Liaison Officer who works in collaboration with counterparts at Hampshire County Council.

4.17 Map 1 in Appendix 1 shows the general location of unauthorised encampments within the assessment period, which was January to December 2011. This period ensured that the number of encampments was recorded in both the warmer and cooler seasons. There were no recorded instances of unauthorised encampments occupied by travelling showpeople.

4.18 Within the assessment period 171 caravans in total were recorded on 56 unauthorised encampments within the borough. The majority of these, 41 encampments, were repeats i.e. the same household / group / person moving from one site to the next. These encampments are indicated in Table 5 below.

4.19 It is noted that the DCLG's Bi Annual Count for July 2011 recorded 14 caravans on unauthorised sites within the borough, whereas the data within Table 5 does not accord with this figure. There is no explanation of this disparity between the two data sets, however the data contained in Table 5 is derived from the council's own database and is considered to be the most accurate source.

4.20 Where information is available (e.g. through awareness and records of the council's Liaison Officer) individual households have been identified. In the interest of privacy an identification letter (A – J) and a colour to highlight their occurrences throughout the year has been used. Where this information is not available the occurrence has been labelled 'unknown'. This has enabled repeat occurrences to be tracked throughout 2011, and to avoid double counting.

**Table 5: Unauthorised Encampments Jan 2011 - Dec 2011**

Location	Arrival	Family / Group / Re-occurring household?	Departure	No. of Caravans
<b>January 2011</b>				
Rutherford Road	30/12/2010	(A)	Left Jan 2011	3
Edison Road	18/01/2011	(A)	Left same month	3
<b>February</b>				
Priestly Road	01/02/2011	(A)	Left March 2011	3
Jays Close	04/02/2011	(B)	Left same month	1
Winchester Road Roundabout	14/02/2011	(B)	Left April 2011	1
<b>March</b>				
Popham Graveyard	14/03/2011	(C)	Left Sept 2011	1
Winslade Layby	28/03/2011	(D)	Left April 2011	1
<b>April</b>				
Jays Close	07/04/2011	(B)	Left same month	1
Bartons mill	17/04/2011	(E)	Left same month	3
Longwood Copse Squirrel Drive	19/04/2011	(F)	Left same month	2
Great Binfield Road	19/04/2011	Unknown	Left same month	2
Barton Mill, Old Basing	19/04/2011	(B & F)	Left same month	8
<b>May</b>				
Horwood Gardens, Basingstoke	03/05/2011	(B & F)	Left Same month	8
Gerswhin Road, Brighton Hill	07/05/2011	(B & F)	Left same month	8
Merton Rise, Basingstoke	09/05/2011	(B & F)	Left same month	8
Jays Close, Basingstoke	02/05/2011	Unknown	Left same month	1
Merton Rise, Basingstoke	12/05/2011	(G)	Left same month	9
Viabes Craft Centre	25/05/2011	(B & F)	Left Same month	6
War Memorial Park	26/05/2011	(B & F)	Left Same month	6
<b>June</b>				
Marnel Park Allotment	01/06/2011	(F)	Left same month	2
Squirrel Drive, Beggarwood	02/06/2011	(F)	Left same month	2
Down Grange School, Basingstoke	03/06/2011	Unknown	Left same month	4
Jays Close, Basingstoke	07/06/2011	(B)	Left same month	2
Gibbins Close, Sherborne St John	01/06/2011	Unknown	Left Same month	No data
Wallop Drive, Basingstoke	11/06/2011	(F)	Left Same month	2
Squirrel Drive,	11/06/2011	(F)	Left same month	2

Location	Arrival	Family / Group / Re-occurring household?	Departure	No. of Caravans
Beggarwood				
Great Binfields Crescent	22/06/2011	(H)	Left same month	1
<b>July</b>				
Crockford Lane	04/07/2011	(B)	Left same month	1
Hamilton Close	04/07/2011	(B)	Left same month	1
Jays close	17/07/2011	(B)	Left Aug 2011	2
<b>August</b>				
Wolverton	01/08/2011	Unknown	Left same month	6
Down Grange playing field	06/08/2011	Unknown Repeat	Left Same month	4
Grafton Way	08/08/2011	Unknown Repeat	Left same month	4
Union Lane, Kingsclere	07/08/2011	(I)	Left same month	7
Bishops Green	09/08/2011	(I)	Left same month	7
Lymington Close	15/08/2011	Unknown	Left same month	No data
Stratfield Sturgis	15/08/2011	Unknown	Left same month	No data
Crockford lane	17/08/2011	(B)	Left same month	2
Hamilton Close	19/08/2011	(B)	Left same month	2
Great Binfields Road	31/08/2011	Unknown	Left same month	3
<b>September</b>				
The Landing, Rooksdown	04/09/2011	Unknown	Left same month	7
Sherfield Road	05/09/2011	(I)	Left same month	2
Barclays, Tadley	07/09/2011	(I)	Left Same Month	3
Sherfield Road	05/09/2011	(I)	Left same month	11
Hamilton Close	08/09/2011	(B)	Left same month	2
Hamilton Close	10/09/2011	(B)	Left same month	2
Squirrel Drive	21/09/2011	(F)	Left same month	2
Hamilton Close	21/09/2011	(B)	Left same month	4
Wallop Drive	22/09/2011	(F)	Left same month	2
Jays Close	27/09/2011	(B)	Left same month	2
A33/Whitmarsh Lane	28/09/2011	(J)	Left same month	1
Sherwood and Holmes Close	30/09/2011	(I)	Oct 2011	2
<b>October</b>				
Hamilton Close	07/10/2011	(B)	Left same month	2
Jays Close	28/10/2011	(B)	Left same month	2
<b>November</b>				
0	0	0	0	0
<b>December</b>				
Hamilton Road	13/12/2011	(B)	Left same month	1
Hamilton Road	28/12/2011	(B)	Left same month	1

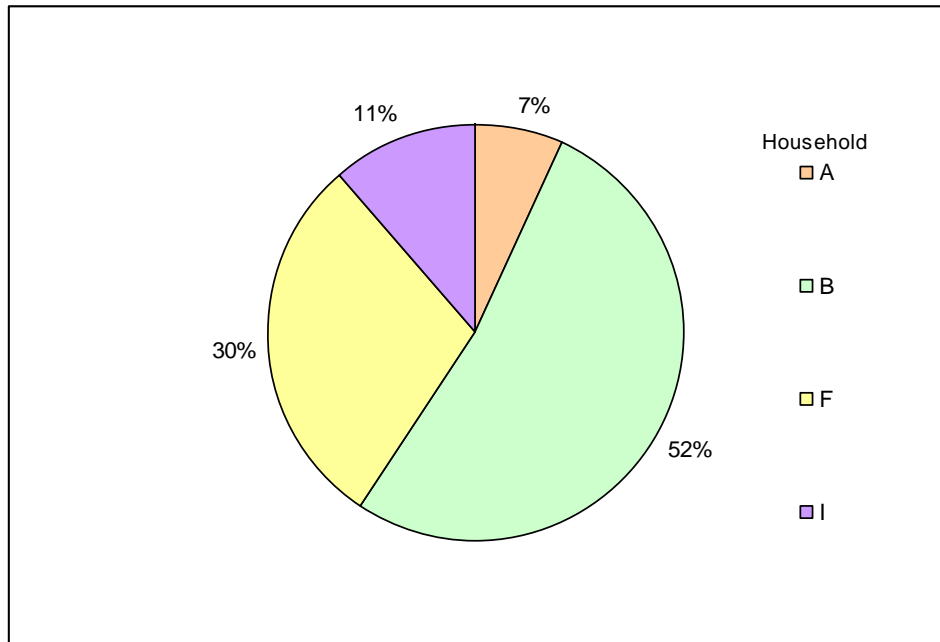
4.21 Using the information in Table 5, Figure 1 illustrates that households B and F equated to 82% of all repeating unauthorised encampments within the borough for 2011.

4.22 Household B was present throughout the year and had a maximum of four caravans, whilst Household F was present through the summer months (April, May, June and September) with a maximum two caravans. In May 2011 these households

resided together at five encampments where on some occasions there was a maximum of eight caravans.

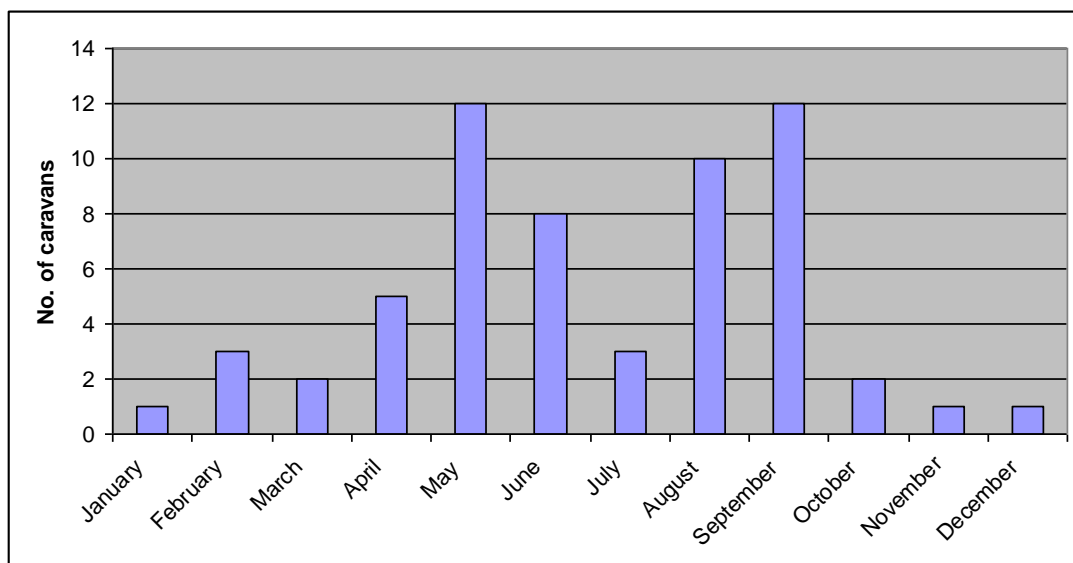
4.23 A number of other households were also present throughout the year, although less frequently. Encampments which have not re-occurred or are indicated as 'unknown' could be assumed as those stopping over temporarily on route to another destination.

**Figure 1: Repeating Households on Unauthorised Encampments**



4.24 Figure 2 illustrates that the frequency of unauthorised encampment within the borough is in general correlation with the recognised national assumption that the occurrences of unauthorised encampments positively correlates with the seasons i.e. more occurrences in the summer than winter months.

**Figure 2: No. of Unauthorised Encampments Jan 11 - Dec 12**



## 5.0 Travelling Patterns

5.1 Map 1 at Appendix 1 shows the geographical distribution of all traveller sites within the borough and its surrounding area.

5.2 All four authorised sites within the borough are located to the north of Basingstoke. Three occupied sites are located close to the A340 Aldermaston Road to Tadley. This could be due to relations with occupiers of the larger sites at Paices Hill and Four Houses Corner, which both lie close to the borough's northern border.

5.3 Map 1 also shows the locations where unauthorised encampments have occurred within the last year (2011) and these can be seen as being concentrated within the Basingstoke town area. It is recognised however that the majority of the encampments were created by the same few households. The concentration within the town area could be attributed to the households' place of work or family connections.

5.4 The unauthorised encampments which were recorded outside the town area seem to be primarily to the north of the borough.

5.5 The survey did not provide any conclusive results in terms of the travel patterns of those travelling the borough. Only four out of the nine people surveyed on site accommodation stated that they regularly travel, and when they do it is to a random location. One respondent who currently resides in bricks and mortar stated that they and their family usually travel seven times a year during the summer in the Basingstoke area.

## 6.0 Questionnaire Findings

### Travelling Showpeople

6.1 An occupant of the only travelling showpeople yard within the borough was interviewed using the questionnaire. For data protection purposes the results from the questionnaire will not be published within this report. However it is clear from the review of planning history for the site and information from the questionnaire that the household has resided in the Basingstoke area for many years. Furthermore from visual inspection of the site it is apparent that the site remains in use by operational travelling showpeople.

### Gypsies and Travellers

6.2 In total there were 11 respondents of Gypsy and Traveller origin who completed the questionnaire in full by interview. These were made up of nine respondents living on site accommodation and two respondents in bricks and mortar accommodation. Four individuals were also questioned however refused to answer most of the questions. Other people refused to engage with the questionnaire completely.

## Main characteristics of the respondents from site accommodation

### Ethnicity

Romany	3	33.4%
Irish Traveller	4	44.4%
Traveller	2	22.2%

### Gender

Male	3	33.4%
Female	6	66.6%

### Age

16-20	1	11.1%
21-30	2	22.2%
31-40	1	11.1%
41-50	4	44.5%
51-60	1	11.1%
60+	0	0%

Main characteristics of the respondents from bricks and mortar accommodation

### Ethnicity

Romany	2	100%
--------	---	------

### Gender

Male	1	50%
Female	1	50%

General Information

## Members of the household

6.3 The survey questionnaires captured a total of 25 persons of Gypsy and Traveller origin (i.e. those on site accommodation both authorised and unauthorised sites and those in bricks and mortar accommodation).

	Total
Number of adults (over 16)	19
Number of children (under 16)	9
Number of elderly relatives or friends	2

## Travel

6.4 The results from the questionnaire were not definitive in respect of travel patterns which appear sporadic. For instance, four respondents stated they travelled all the time to random locations.

6.5 Five respondents who reside on site accommodation do not travel on a regular basis.

6.6 Of the four respondents from site accommodation who stated they travel regularly, two stated they travel on their own, whilst two stated they travel as a family group.

6.7 One respondent from bricks and mortar accommodation stated they do not travel, whilst another stated they travel as a family seven times a year in the summer within the Basingstoke area.

6.7 Overall the surveys found that amongst the participants' there were no preferred times of the year to travel

### Household Formation

6.8 The surveys found that 5 respondents considered that their children would require their own accommodation within the next five years

Yes	5	45%
No	6	55%

6.9 However, two respondents also stated that the household would like to move to outside the borough within the next 5 years. As such this has been taken into account in Section 8.0 when assessing the current demand for accommodation.

## 7.0 Travelling Showpeople Accommodation Need

7.1 There is only one yard within the borough which provides accommodation for a single household and storage/maintenance space for show equipment. A member of the household agreed to answer the questionnaire.

7.2 Due to data protection reasons specific information gained from the survey will not be published within this report. However review of the site and planning history illustrates that the household continues to be part of the travelling showperson way of life, travelling to events throughout the year.

7.3 From viewing aerial photographs of the yard, it appears to be relatively crowded with structures and machinery, and there may be a demand in the future for an extension or additional yard within the area due to an unfavourable ratio between living space and storage space. It is noted that no planning applications for extensions to the existing yard or for a replacement/additional yard have been submitted to the council within the last five years. There are also been no recorded instances of unauthorised yards or encampments occupied by travelling showpeople within the borough in the last 12 months.

7.4 It would therefore appear, by this observation, that there is no immediate demand for an addition yard from the household at this stage, however it is acknowledged that their accommodation needs could change at any time for, instance, due to family circumstances or travel/storage requirements.

7.5 On this basis it is considered that there is no likely need for a net gain of yards within the borough for the next five years.

7.6 It is suggested that if a planning application is submitted for an extension to, or replacement yard then it should be assessed on its own individual merits and with regard to the need which should be demonstrated by the applicant.

## 8.0 Gypsy and Traveller Accommodation Need

8.1 This chapter presents the calculation of accommodation needs assessment for Gypsies and Travellers for the five year period 2012 - 2017. The model used for this calculation is based on the example given in the government's GTAA Guidance 2007.

8.2 Table A identifies the current residential supply of pitches within the borough. Table B outlines the likely demand based on the results of the research carried out for this report. An explanation of each step within the table has been provided within the key below, where appropriate.

<b>Table A</b>	
Current <b>occupied</b> authorised pitches in local authority area	5
<b>Current Residential Supply</b>	
Number of available unused pitches <b>(1)</b>	0
Number of existing authorised pitches expected to become vacant in the next 5 years <b>(2)</b>	0
Number of households in authorised site accommodation expressing a desire to live in housing <b>(2)</b>	0
New Local Authority pitches already planned in year 1	0
Existing applications for private site development/extension likely to gain planning permission during year 1 <b>(3)</b>	0
<b>Total supply</b>	0
<b>Table B</b>	
<b>Current Residential Demand</b>	
Households seeking permanent site accommodation within the borough <b>(4)</b>	4
No. of the most frequent households on unauthorised encampments between Jan 2011 – 2012 and those who it is expected will remain within the borough <b>(5)</b>	2
Households on unauthorised developments for which planning permission is not expected in the near future <b>(6)</b>	1
Currently overcrowded households <sup>2</sup> <b>(7)</b>	0
New family formations expected to arise from within existing households on sites within five years <b>(8)</b>	3
In housing but with a desire for site accommodation <b>(9)</b> <b>Error! Reference source not found.</b>	6
<b>Current estimate demand</b>	16
<b>Shortfall (Demand minus Supply)</b>	16

<sup>2</sup> Overcrowded means where family numbers have grown to the extent that there is now insufficient space for the family within its caravan accommodation **and** insufficient space on the pitch or site for a further caravan.

## Key

- (1) See Table 4: Overall Capacity of Gypsy and Traveller Sites. There are no vacant authorised pitches within the borough.
- (2) Assumed from the survey questionnaire findings. The respondents occupying authorised sites stated they did not intend to move within the next 5 years.
- (3) BDB/75288 is currently being determined and there is no indication whether it is to be approved. No local authority sites are planned for the year ahead.
- (4) This figure is made up of the current undetermined planning application BDB/75288 for two pitches and two respondents to the survey who had been at the side of the road at various locations for at least the last six years within the borough. Both indicated that they would prefer to remain at the side of the road. However despite this preference to remain at the side of the road, it is considered that the situation of the households equates to a need for two permanent pitches as they currently do not have an authorised site on which to reside.
- (5) Household B & F as identified as the most frequent occupiers of unauthorised encampments in Table 5 and Figure 1.
- (6) See Table 3: Unauthorised Developments.
- (7) The issue of overcrowding was not explicitly covered by the survey questionnaire for occupiers of site accommodation. However because the authorised sites have been brought into use only in the last five years and because no subsequent planning applications for further caravans have been submitted for these particular sites it is considered likely that there is no such issue on sites within the borough at this current time. Notwithstanding this however, it will be recommended that in further GTTSANAs for the area this issue is explored in more detail. One respondent did express the aspiration for a further mobile home on their site as an additional comment to the survey questionnaire. However this is not considered evidence that the household falls within the definition of being 'overcrowded' (see definition at Footnote 2) as the comment suggests there is sufficient room within the site for an addition unit.

To assess overcrowding as part of the bricks and mortar questionnaire interview, questions were included for instance; how many people live within the home, how many couples, and how many bedrooms and whether there is enough space for all occupants within the home? One respondent stated that there is not enough space for all occupants within the home, however also stated that there are two couples, no children and two bedrooms within the home. As such it is not considered that this household can be described as overcrowded.

- (8) Identified from the surveys see paragraph 6.8. Two respondents from an unauthorised encampment indicated that their children would need their own accommodation within five years but also stated that their households intend to leave the borough within the next five years. This data has therefore been excluded from the tables above.

- (9) Both respondents interviewed as part of the bricks and mortar survey reside in accommodation rented from housing associations and stated that their family is not happy living in their current accommodation and would rather live on local authority run site accommodation. One respondent stated their household would require three separate homes and the other three to four.

## Assessing the need

8.3 As identified above there is a current demand for 16 additional pitches within the borough.

8.4 However demand for accommodation is not necessarily the same as need. The traditional method of distinguishing need and demand for accommodation, by considering the ability to buy on the open market, cannot be applied to Gypsies and Travellers firstly since the barriers to accessing pitches are generally not cost-related, and secondly because gathering reliable financial and employment information from Gypsies and Travellers is difficult.

8.5 Demand, for instance, could be attributed to planning applications for sites which have been submitted because of the aspiration of the traveller not necessarily because they are in need for accommodation.

8.6 As outlined within the Section 1 of this report, the accommodation need for Gypsies and Travellers give rise to similar types of need than the rest of the community, but because of their way of life and culture their needs are set within a different context. Need can therefore be attributed to the following households:

### *With no authorised site anywhere on which to reside*

8.7 It is clear that two households are likely to be in need of site accommodation as they have resided on a significant proportion of unauthorised encampments throughout the last year, as shown in Figure 1: Repeating Households on Unauthorised Encampments. Further analysis of the data using 'frontline' knowledge from the council's Gypsy Liaison Officer reports that Household B is in fact formed of three separate households of the same family. The family have two bricks and mortar homes within the Basingstoke area. Household F is known to have a permanent pitch outside the borough but in Hampshire. These families are sometimes together and sometimes apart, within their bricks and mortar or at the road side. Whilst the data indicates a need for permanent pitches the 'frontline' information would appear that temporary stopping place provision would be more suitable for these households.

8.8 Two participants of the survey indicated that they have been within the borough for at least the last six years living at the side of the road and explained they have a preference to remain at the side of the road. Whilst this preference is acknowledged, it is considered that it does not override the need of these households for authorised pitches. It is therefore considered that a need for **two** pitches has also been identified by this evidence. It should be noted here that due to the location and household at the time of the survey this apparent need is not a double count of the need identified at 8.7.

8.9 It appears that a further household has been residing on an unauthorised development (i.e. land within their ownership but with no planning permission) whether intermittently or permanently since at least 2008, although it is reported that the development has been in existence for longer. An application to regularise the

development via a Certificate of Lawful Use has been submitted to the council and at the time of writing the application has not been determined. If it is subsequently refused with enforcement action taken to secure the cessation of the use on the land, then this household would likely be in need of accommodation.

8.10 However it is not possible to speculate the likely outcome of this case, as the application would have to be assessed on its own merits. In addition no enforcement proceedings have been taken against the occupants. It is therefore considered that at the current time the household is not in need of accommodation. The situation regarding this site should be monitored. If the household is forced to move off the land by way of enforcement action and has to make a planning application elsewhere, the need of the household can be assessed during the planning process.

*Whose existing site accommodation is overcrowded or unsuitable, but who are unable to obtain larger or more suitable accommodation*

8.11 Questions concerning the issue of overcrowding were not contained within the questionnaire survey of site accommodations. However given the largest authorised site within the borough is only formed of two pitches and no applications have been submitted for additional pitches on any of the sites in the last two years it is likely that overcrowding is not currently an issue. It will be recommended however that this issue is directly addressed in an update to the borough's GTAA in the future. As reported above the bricks and mortar surveys indicated no occurrences of overcrowding.

*Which contain suppressed households who are unable to set up separate family units and who are unable to access a place on an authorised site, or obtain or afford land to develop one*

8.12 No suppressed households (see Glossary) were discovered, however one respondent from an authorised site stated that their child would require their own home within five years. As such this should be counted as family formation and included as a need for **one** pitch in the next five years.

8.13 Two respondents of the bricks and mortar interviews indicated that within the next 5 years their children (one son each) would require their own accommodation. It was indicated that they would want to live on local authority run site accommodations. As such a need for **two** pitches has been identified.

*Whose existing bricks and mortar accommodation is overcrowded or unsuitable*

8.14 The Hampshire Ethnic Minority and Traveller Achievement Service (EMTAS) traveller questionnaire in 2011 identified that 37 pupils at schools within the borough were in bricks and mortar housing. It is possible that some of these families have a psychological aversion to bricks and mortar accommodation, but are unable to find suitable site accommodation and therefore have a need.

8.15 In total, two households in bricks and mortar were identified and surveyed. Both currently live in accommodation rented from housing associations. In response to the question of whether they were happy with the type of home they live in both respondents stated that their family was not happy and would rather live in local authority run site accommodations. Both respondents also stated that they previously resided on unauthorised sites prior to moving into bricks and mortar. The survey seems to indicate that both families have an aversion to bricks and mortar and are residing within this type of accommodation because there is no available site

accommodation within the Basingstoke area. As such a need for **two** pitches has been identified.

8.16 Both of the respondents stated that their children would also require their own accommodation within the next 5 years and this has been reflected above in paragraph 8.13. The respondents also specified the number of new separate homes they felt their household would require. In both cases this was higher than what would be expected for the number of couples identified within the current home and the number of children. This was likely due to a desire to have family nearby by and on the same site. For the purpose of this Assessment where this desire has been identified this has not excluded as forming part of the total need for sites.

## Summary

8.17 Whilst there appears to be a demand for 16 pitches, when considering the need, i.e. by discounting the current planning application BDB/75288 for two pitches, the unauthorised development (see 8.9 & 8.10) and the number of new homes desired from the survey as need, the Assessment has identified a need for seven permanent pitches and two temporary stopping places within the borough to be provided within the next five years

## 9.0 Conclusions

### Accommodation Needs Assessment

#### Travelling Showpeople

9.1 The findings appear to show that there is currently no need arising locally for *additional* yards within the borough. It is however recommended that any planning applications relating to travelling showpeople accommodation or storage requirements are assessed on their own individual merits with particular regards to any justifiable and reasonable need which is to be demonstrated by the applicant.

#### Gypsies and Travellers

9.2 Based on the evidence collected it is considered that there is a need for **seven** additional permanent residential pitches and **two** temporary stopping places to be provided within the borough by 2017.

9.3 It is considered that the majority of this need may be met through the development of sites within or near to the developed area of Basingstoke in light of the proportion of unauthorised encampments which were identified throughout the assessment period within this area. In addition a number of respondents to the survey interviews stated a preference to be close to Basingstoke town.

9.4 It is important to recognise that the ability to travel does remain an important part of Gypsy and Traveller culture and that planning for the accommodation of Gypsies and Travellers must recognise this factor. As such transit sites and temporary stops should also be considered.

9.5 Temporary stopping places are sites which can be used by Gypsies and Travellers for a few nights at a time for example when visiting family or on route to further afield. They do not need to be available all year but for periods of increased demand. They also do not need to be equipped to the same standard as a permanent site or transit site but should have some basic facilities, for example, cold water supply, portaloos (separate provision for men and women), sewerage disposal point and refuse disposal facilities (CLG, 2008). Providing two temporary stopping places would likely reduce the occurrences of unauthorised encampments within the borough particularly if a network of provision is provided on a Hampshire wide basis.

9.6 In comparison, transit sites are generally open all year round and are for Gypsies and Travellers who are on the move and are in need of accommodation for a few days or a few weeks at a time. It should not provide permanent accommodation. Government guidance suggests that a transit site is likely to require a resident site manager because of difficulties in managing this type of site and that the facility should be of a standard to safely and healthy accommodate travellers for the amount of time permitted.

9.7 The Portfolio Holder Executive Decision in December 2010 determined, amongst other measures (see 1.24), that the development of a transit site within the borough would not be progressed. However it was also concluded that if other councils in the south east establish a network of transit sites, and government funding becomes available, the situation should be reviewed.

9.8 Whilst it does not appear that there is an immediate demand for transit pitches within the borough is considered that because of the borough's position close to major routes such as the M3 and A34, as well as large established sites close to our borders, the borough may be seen as an attractive place to stay on route to elsewhere. It is therefore recommended that the borough work with neighbouring local authorities to consider a network of transit sites within the region. A well located network of transit sites throughout the region is likely to have benefits in terms of dealing with and managing unauthorised encampments.

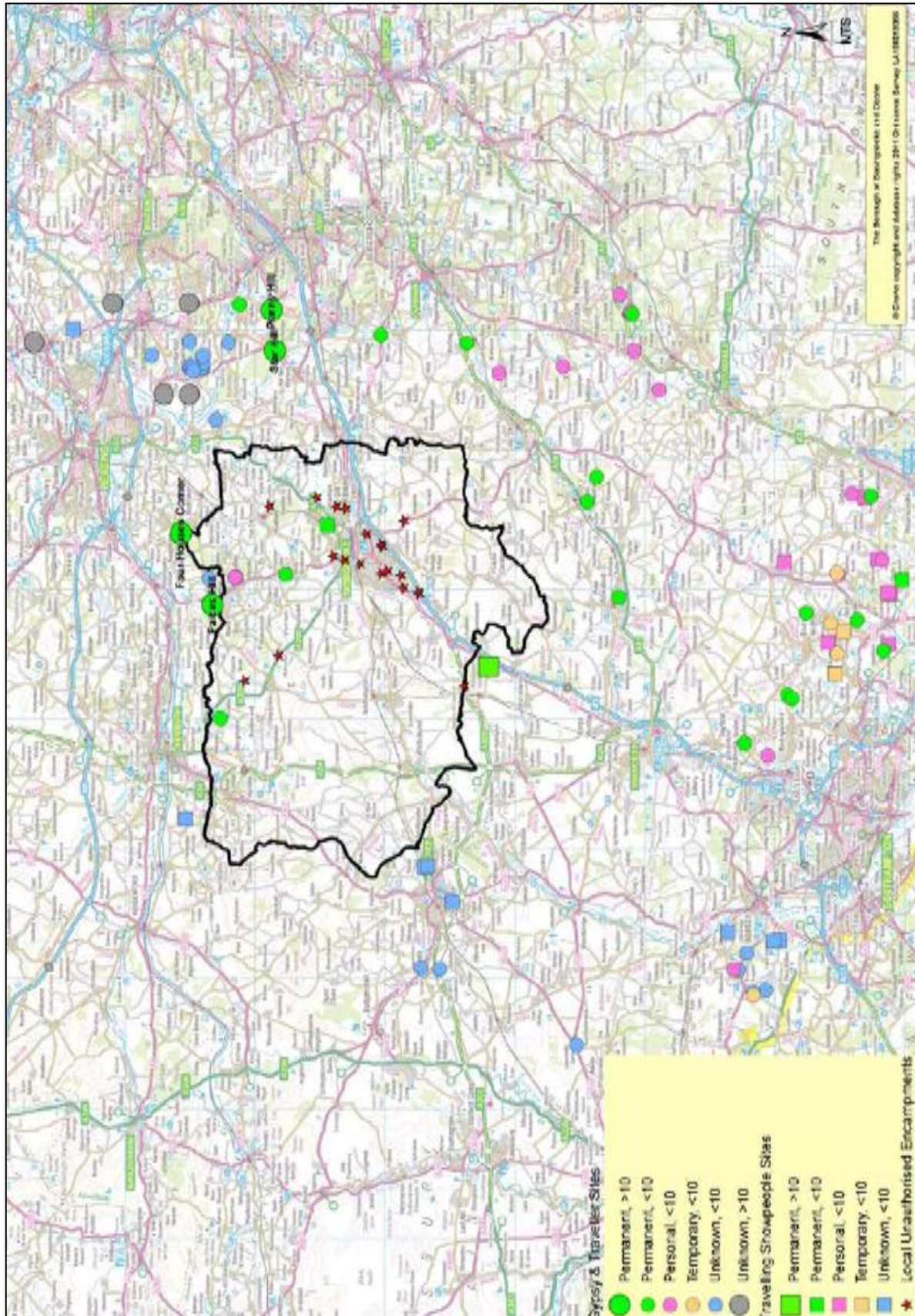
## **10.0 Appendices**

**Appendix 1:** Map 1 Location of Authorised and Unauthorised Traveller Sites

**Appendix 2:** Results from Questionnaires

**Appendix 3:** Copy of Questionnaires

# Appendix 1: Map 1 Location of Authorised and Unauthorised Traveller Sites



## Appendix 2: GTAA Questionnaire Results

### Results from authorised and unauthorised gypsy and traveller sites

N.B. Figures have been rounded up to 1 decimal point where appropriate to ensure the total = 100%

#### Q1: Ethnicity

Romany	3	33.4%
Irish Traveller	4	44.4%
Traveller	2	22.2%

#### Q2: Gender

Male	3	33.4%
Female	6	66.6%

#### Q3: Age

16-20	1	11.1%
21-30	2	22.2%
31-40	1	11.1%
41-50	4	44.5%
51-60	1	11.1%
60+	0	0%

#### Q4: Who lives in your household?

Type	No. of respondents/cases	Total no of adults/children
Number of adults (over 16)	9	14
Number of children (under 16)	4	9
Number of elderly relatives or friends	0	0
Number of adult relatives or friends with special needs	0	0

#### Q5: Where are you living now?

Housing Association	0	0%
Serviced site (Local Authority)	0	0%
Side of road	6	66.7%
Private site	0	0%
Own home	0	0%
Privately rented	0	0%
Own land - with planning permission	2	22.2%
Own land - without planning permission	1	11.1%
Homeless accommodation	0	0%

#### Q6: Type of housing?

House	0	0%
Static Caravan	2	22.2%
Touring Caravan	7	77.8%

**Q7: Do you own or rent your home?**

Lease	0	0%
License	0	0%
Rented	0	0%
Owned	7	77.8%
Unanswered	2	22.2%

**Q8: Length of time at current home?**

Less than 1 month	0	0%
Between 1 mths and 6 mths	2	22.2%
Between 6 mths and 1 year	0	0%
Between 1 year and 5 years	2	22.2%
More than 5 years	3	33.4%
Unanswered	2	22.2%

**Q9: Details of previous home (if any):**

Side of Road	9	100%
Serviced site	0	0%
Transit site	0	0%
Social Housing	0	0%
No previous accommodation	0	0%
Temporary/homeless accommodation	0	0%
Privately rented	0	0%
Privately owned	0	0%
Tolerated site	0	0%
Travelling	0	0%

**Q10: Length of time at previous home:**

Less than 1 month	2	22.2%
Between 1 month and 6 months	2	22.2%
Between 6 months and 1 year	0	0%
Between 1 year and 5 years	0	0%
More than 5 years	5	55.6%

**Q11: Why did you decide to leave?**

Family reasons	0	0%
Intimidation	0	0%
Travelling	0	0%
Unsuitable location	2	22.2%
Unsuitable living conditions	2	22.2%
Had to move	3	33.4%
Evicted	2	22.2%
Refused planning permission	0	0%
Offered other accommodation	0	0%
Looking for employment	0	0%

**Q12: Where have you moved from?**

Outside the borough	6
Within the borough	2

**Q13: Where would you prefer to live?**

Housing Association	2	22.2%
Grouped Accommodation on permanent pitches	2	22.2%
Privately owned site	2	22.2%
Privately rented site	1	11.2%
Remain at side of road	2	22.2%
Serviced site	0	0%
A series of transit sites in the district	0	0%
Mobile homes with a small group of travellers	0	0%

**Q14: Do you or your family have a local connection to Basingstoke and Deane?**

Yes	5	55.6%
No	4	44.4%

**Q15: If yes, please give details:**

Whitchurch
Whitchurch
Family in area
Family in Paices Hill

**Q16: Are you expecting to move in the next 5 years?**

Yes	4	44.4%
No	5	55.6%
Wish to move but can't	0	0%

**Q17: If you are expecting to move within the next 5 years, are you considering a:**

Move within the Borough	0
Basingstoke Town	0
Overton	0
Whitchurch	2
Kingsclere	0
Bramley	0
Tadley	0

**Q18: If other, please specify:**

Winchester	2
Wherever	2

**Q19: If you are expecting a move within the next 5 years, are you considering a move outside the borough?**

Don't know	1
------------	---

**Q20: Are any of your children likely to need their own home in the next 5 years?**

Yes	3	33.3%
No	6	66.7%

**Q21: When are they likely to need their own home?**

When Married	2
Anytime	2
As soon as possible	1

**Q22: If moving outside of Basingstoke and Deane, please indicate why you are moving:**

Lack of affordable housing	0	0%
To start a family	0	0%
Intimidation/harassment	0	0%
Better access to work	2	22.2%
Better access to education facilities	0	0%
Have to move on	2	22.2%
Eviction	0	0%
Planning permission refused	0	0%
Safety/fear of crime	0	0%
Unanswered	5	55.6%

**Q23: Do you pursue a nomadic way of life?**

Yes	2	22.2%
No	7	77.8%

**Q24: How often do you travel?**

All the time	4	44.4%
Once a year	0	0%
Twice a year	0	0%
3 times a year	0	0%
4 times a year	0	0%
5+ times a year	0	0%
Unanswered	5	55.6%

**Q25: Are you planning to travel in the next 6 months?**

Yes	2	22.2%
No	7	77.8%

**Q26: Where do you normally travel to?**

Other sites within the borough	0	0%
Other sites within Hampshire	0	0%
Other sites within the South East	0	0%
Random locations with no specific destination	4	44.4%
One specific destination	0	0%
A set pattern of locations within a certain area	0	0%
Unanswered	5	55.6%

**Q27: Who do you travel with?**

On my own	2	22.2%
As a family group	2	22.2%
Immediate friends and family	0	0%
A group of travellers unrelated to me	0	0%
Unanswered	5	55.6%

**Q28: What is your preferred time of year to travel?**

Spring	0	0%
Summer	0	0%
Autumn	0	0%
Winter	0	0%
All year round	4	44.4%
Unanswered	5	55.6%

**Q29: Do you travel:**

To find work	0	0%
To visit friends/family	0	0%
To visit specific events	0	0%
For family reasons	0	0%
Other reasons	4	44.4%
Unanswered	5	55.6%

**Q30: Do you have any children in education?**

Yes	1	11.1%
No	8	88.9%

**Q31: How many children do you have in education?**

1	1	11.1%
2	0	0%
3	0	0%
4	0	0%
5	0	0%
5+	0	0%
Unanswered	8	88.9%

**Q32: What type of school do they attend?**

Infants	0	0%
Primary	0	0%
Secondary	1	11.1%
College	0	0%
University	0	0%
Unanswered	8	88.9%

**Q33: Do any of your children have special educational needs?**

Yes	0	0%
No	7	77.8%
Unanswered	2	22.2%

## Results from Gypsies and Travellers residing in bricks and mortar

### Q1 and Q2 Administration Questions

#### Q3 Ethnicity

Romany	2	100%
--------	---	------

#### Q4 Gender

Male	1	50%
Female	1	50%

#### Q5 Number of people currently living in home (total identified)

Adults (over 16)	5
Elderly Relatives	2

#### Q6 Number of couples currently living in the home (total identified)

Number of Couples	3
-------------------	---

#### Q7 Number of bedrooms in home

Respondent 1	2
Respondent 2	3

#### Q8 Is there enough space for all the occupants in the home?

Yes	1
No	1

#### Q9 Do you need any more bedrooms

No	1
No Answer	1

#### Q10 How long has the household lived at the current address?

Between 1 year and 5 years	1
More than 5 years	1

#### Q11 Is the house owned or rented

Rented from a housing association	2
-----------------------------------	---

#### Q12 Details of previous home

Unauthorised Site	2
-------------------	---

#### Q13 Length of time at previous home of household

More than 5 years	2
-------------------	---

#### Q14 Why did the household leave the previous home?

Travelling	1
Unsuitable Location	1

**Q15 Where did the household move from?**

Respondent 1	Various Sites
Respondent 2	Basingstoke Location

**Q16 Is the household happy with the type of home they live in?**

No the family would rather live in other accommodation	2
--	---

**Q17 If no, where would the family rather live?**

Location Authority Site	2
-------------------------	---

**Q18 If not happy does the household require this new accommodation within the next 5 years?**

Yes	2
-----	---

**Q19 If the household would like to move, where would they like to move to?**

Site close to town	2
--------------------	---

**Q20 Has the household applied for planning permission for site accommodation in the last five years?**

No	2
----	---

**Q21 Will any of the other people in your household need and/or are likely to move to their own separate home within the next 5 years? (e.g. son/daughter)**

Yes	2
-----	---

**Q22 How many new separate homes will be needed?**

Respondent 1	3
Respondent 2	3-4

**Q23 What type of accommodation do you think they would like to live in?**

Local Authority Site	2
----------------------	---

**Q24 Where do you think they would like to live?**

Respondent 1	On site with parents
Respondent 2	Close to town

**Q25 How many times have you travelled in the past 12 months?**

Respondent 1	0
Respondent 2	7

**Q26 What time of year do you travel?**

Respondent 2	Summer
--------------	--------

**Q27 Is this your usual travel pattern?**

Respondent 2	Yes
--------------	-----

**Q28 Who do you travel with?**

Respondent 2	Family
--------------	--------

**Q29 How many tourers do you normally travel with?**

Respondent 2	2
--------------	---

**Q30 In the last five years where did you travel to the most?**

Respondent 2	Basingstoke Area
--------------	------------------

**Q32 Admin.**

## GTAA Questionnaire results from housing associations

*N.B. Figures have been rounded up to 1 decimal point where appropriate to ensure the total = 100%*

### Q1: How many Gypsies and Travellers do you estimate live in the housing you provide in Basingstoke and Deane Borough Council?

0 Families	4	57.4%
1 Family	1	14.2%
2 Families	1	14.2%
Unanswered	1	14.2%

### Q2: Do you identify Gypsies and Travellers in ethnic records and monitoring of housing applications and/or allocations?

Yes	6	85.8%
No	1	14.2%

### Q3: No of Gypsies and Travellers currently registered for housing:

0	1	14.2%
Not Known	1	14.2%
Unanswered	5	71.6%

### Q4: No of Gypsies and Travellers housed in 2009/2010

0	1	14.2%
1	2	28.4%
Unanswered	4	57.4%

### Q5: No of Gypsies and Travellers housed in 2008/2009

0	3	42.6%
Unanswered	4	57.4%

### Q6: No of Gypsies and Travellers housed in 2007/2008

0	2	28.4%
Unanswered	5	71.6%

### Q7: How has this number of Gypsies and Travellers moving into your accommodation changed over the past 5 years?

Remained broadly the same	3	42.6%
Not known	4	57.4%

## Appendix 3: Copies of Questionnaires

### Gypsy and Traveller Accommodation Assessment Questionnaire

The Council is carrying out a survey to help us to work out how many sites will be needed for Gypsies and Travellers over the next 5 years. To do this we need you to answer some questions about your family, where you live and how often you travel. The information you give us will be treated confidentially and no one will be able to tell that you took part, but your answers will help us to make sure we plan for the future of the gypsy and traveller community as well as the settled community

#### Q1 Ethnicity of Respondent

	Respon dent 1	Respon dent 2	Respon dent 3	Respon dent 4
Romany	<input type="checkbox"/>	<input type="checkbox"/>	<input type="checkbox"/>	<input type="checkbox"/>
Irish Traveller	<input type="checkbox"/>	<input type="checkbox"/>	<input type="checkbox"/>	<input type="checkbox"/>
Traveller	<input type="checkbox"/>	<input type="checkbox"/>	<input type="checkbox"/>	<input type="checkbox"/>
Travelling Showperson	<input type="checkbox"/>	<input type="checkbox"/>	<input type="checkbox"/>	<input type="checkbox"/>
Refused	<input type="checkbox"/>	<input type="checkbox"/>	<input type="checkbox"/>	<input type="checkbox"/>

#### Q2 Gender

	Respon dent 1	Respon dent 2	Respon dent 3	Respon dent 4
Male	<input type="checkbox"/>	<input type="checkbox"/>	<input type="checkbox"/>	<input type="checkbox"/>
Female	<input type="checkbox"/>	<input type="checkbox"/>	<input type="checkbox"/>	<input type="checkbox"/>

#### Q3 Age

	Respon dent 1	Respon dent 2	Respon dent 3	Respon dent 4
16-20	<input type="checkbox"/>	<input type="checkbox"/>	<input type="checkbox"/>	<input type="checkbox"/>
21-30	<input type="checkbox"/>	<input type="checkbox"/>	<input type="checkbox"/>	<input type="checkbox"/>
31-40	<input type="checkbox"/>	<input type="checkbox"/>	<input type="checkbox"/>	<input type="checkbox"/>
41-50	<input type="checkbox"/>	<input type="checkbox"/>	<input type="checkbox"/>	<input type="checkbox"/>
51-60	<input type="checkbox"/>	<input type="checkbox"/>	<input type="checkbox"/>	<input type="checkbox"/>
60+	<input type="checkbox"/>	<input type="checkbox"/>	<input type="checkbox"/>	<input type="checkbox"/>

#### Q4 Who lives in your household? (Specify Number of each type)

	Respon dent 1	Respon dent 2	Respon dent 3	Respon dent 4
Number of Adults(over 16)	<input type="checkbox"/>	<input type="checkbox"/>	<input type="checkbox"/>	<input type="checkbox"/>
Number of Children(under 16)	<input type="checkbox"/>	<input type="checkbox"/>	<input type="checkbox"/>	<input type="checkbox"/>
Number of Elderly friends or relatives	<input type="checkbox"/>	<input type="checkbox"/>	<input type="checkbox"/>	<input type="checkbox"/>
Number of Adult friends or relatives with special needs	<input type="checkbox"/>	<input type="checkbox"/>	<input type="checkbox"/>	<input type="checkbox"/>
No	<input type="checkbox"/>	<input type="checkbox"/>	<input type="checkbox"/>	<input type="checkbox"/>
Refused	<input type="checkbox"/>	<input type="checkbox"/>	<input type="checkbox"/>	<input type="checkbox"/>

#### Q5 Where are you living now?

	Respon dent 1	Respon dent 2	Respon dent 3	Respon dent 4
Housing Association	<input type="checkbox"/>	<input type="checkbox"/>	<input type="checkbox"/>	<input type="checkbox"/>
Serviced site ( Local Authority)	<input type="checkbox"/>	<input type="checkbox"/>	<input type="checkbox"/>	<input type="checkbox"/>
Side of road	<input type="checkbox"/>	<input type="checkbox"/>	<input type="checkbox"/>	<input type="checkbox"/>
Private site	<input type="checkbox"/>	<input type="checkbox"/>	<input type="checkbox"/>	<input type="checkbox"/>
Own home	<input type="checkbox"/>	<input type="checkbox"/>	<input type="checkbox"/>	<input type="checkbox"/>
Privately rented	<input type="checkbox"/>	<input type="checkbox"/>	<input type="checkbox"/>	<input type="checkbox"/>
Own land - with planning permission	<input type="checkbox"/>	<input type="checkbox"/>	<input type="checkbox"/>	<input type="checkbox"/>
Own land - without planning permission	<input type="checkbox"/>	<input type="checkbox"/>	<input type="checkbox"/>	<input type="checkbox"/>
Homeless accommodation	<input type="checkbox"/>	<input type="checkbox"/>	<input type="checkbox"/>	<input type="checkbox"/>
Other	<input type="checkbox"/>	<input type="checkbox"/>	<input type="checkbox"/>	<input type="checkbox"/>
Refused	<input type="checkbox"/>	<input type="checkbox"/>	<input type="checkbox"/>	<input type="checkbox"/>

**Q6 Type of housing?**

	Respon dent 1	Respon dent 2	Respon dent 3	Respon dent 4
House	<input type="checkbox"/>	<input type="checkbox"/>	<input type="checkbox"/>	<input type="checkbox"/>
Static caravan	<input type="checkbox"/>	<input type="checkbox"/>	<input type="checkbox"/>	<input type="checkbox"/>
Touring caravan	<input type="checkbox"/>	<input type="checkbox"/>	<input type="checkbox"/>	<input type="checkbox"/>
Refused	<input type="checkbox"/>	<input type="checkbox"/>	<input type="checkbox"/>	<input type="checkbox"/>

**Q7 Do you own or rent your home?**

	Respon dent 1	Respon dent 2	Respon dent 3	Respon dent 4
Lease	<input type="checkbox"/>	<input type="checkbox"/>	<input type="checkbox"/>	<input type="checkbox"/>
License	<input type="checkbox"/>	<input type="checkbox"/>	<input type="checkbox"/>	<input type="checkbox"/>
Rented	<input type="checkbox"/>	<input type="checkbox"/>	<input type="checkbox"/>	<input type="checkbox"/>
Owned	<input type="checkbox"/>	<input type="checkbox"/>	<input type="checkbox"/>	<input type="checkbox"/>
Other	<input type="checkbox"/>	<input type="checkbox"/>	<input type="checkbox"/>	<input type="checkbox"/>
Refused	<input type="checkbox"/>	<input type="checkbox"/>	<input type="checkbox"/>	<input type="checkbox"/>

**Q8 Length of time at current home?**

	Respon dent 1	Respon dent 2	Respon dent 3	Respon dent 4
Less than 1 month	<input type="checkbox"/>	<input type="checkbox"/>	<input type="checkbox"/>	<input type="checkbox"/>
Between 1 month and 6 months	<input type="checkbox"/>	<input type="checkbox"/>	<input type="checkbox"/>	<input type="checkbox"/>
Between 6 months and 1 year	<input type="checkbox"/>	<input type="checkbox"/>	<input type="checkbox"/>	<input type="checkbox"/>
Between 1 year and 5 years	<input type="checkbox"/>	<input type="checkbox"/>	<input type="checkbox"/>	<input type="checkbox"/>
More than 5 years	<input type="checkbox"/>	<input type="checkbox"/>	<input type="checkbox"/>	<input type="checkbox"/>
Refused	<input type="checkbox"/>	<input type="checkbox"/>	<input type="checkbox"/>	<input type="checkbox"/>

**Q9 Details of previous home (if any):**

	Respon dent 1	Respon dent 2	Respon dent 3	Respon dent 4
Serviced site	<input type="checkbox"/>	<input type="checkbox"/>	<input type="checkbox"/>	<input type="checkbox"/>
Transit site	<input type="checkbox"/>	<input type="checkbox"/>	<input type="checkbox"/>	<input type="checkbox"/>
Social housing	<input type="checkbox"/>	<input type="checkbox"/>	<input type="checkbox"/>	<input type="checkbox"/>
Side of road	<input type="checkbox"/>	<input type="checkbox"/>	<input type="checkbox"/>	<input type="checkbox"/>
No previous accommodation	<input type="checkbox"/>	<input type="checkbox"/>	<input type="checkbox"/>	<input type="checkbox"/>
Temporary/homeless accommodation	<input type="checkbox"/>	<input type="checkbox"/>	<input type="checkbox"/>	<input type="checkbox"/>
Privately rented	<input type="checkbox"/>	<input type="checkbox"/>	<input type="checkbox"/>	<input type="checkbox"/>
Privately owned	<input type="checkbox"/>	<input type="checkbox"/>	<input type="checkbox"/>	<input type="checkbox"/>
Tolerated site	<input type="checkbox"/>	<input type="checkbox"/>	<input type="checkbox"/>	<input type="checkbox"/>
Travelling	<input type="checkbox"/>	<input type="checkbox"/>	<input type="checkbox"/>	<input type="checkbox"/>
Refused	<input type="checkbox"/>	<input type="checkbox"/>	<input type="checkbox"/>	<input type="checkbox"/>

**Q10 Length of time at previous home:**

	Respon dent 1	Respon dent 2	Respon dent 3	Respon dent 4
Less than 1 month	<input type="checkbox"/>	<input type="checkbox"/>	<input type="checkbox"/>	<input type="checkbox"/>
Between 1 month and 6 months	<input type="checkbox"/>	<input type="checkbox"/>	<input type="checkbox"/>	<input type="checkbox"/>
Between 6 months and 1 year	<input type="checkbox"/>	<input type="checkbox"/>	<input type="checkbox"/>	<input type="checkbox"/>
Between 1 year and 5 years	<input type="checkbox"/>	<input type="checkbox"/>	<input type="checkbox"/>	<input type="checkbox"/>
More than 5 years	<input type="checkbox"/>	<input type="checkbox"/>	<input type="checkbox"/>	<input type="checkbox"/>
Refused	<input type="checkbox"/>	<input type="checkbox"/>	<input type="checkbox"/>	<input type="checkbox"/>

**Q11 Why did you decide to leave?**

	Respon dent 1	Respon dent 2	Respon dent 3	Respon dent 4
Family reasons	<input type="checkbox"/>	<input type="checkbox"/>	<input type="checkbox"/>	<input type="checkbox"/>
Intimidation	<input type="checkbox"/>	<input type="checkbox"/>	<input type="checkbox"/>	<input type="checkbox"/>
Travelling	<input type="checkbox"/>	<input type="checkbox"/>	<input type="checkbox"/>	<input type="checkbox"/>
Unsuitable location	<input type="checkbox"/>	<input type="checkbox"/>	<input type="checkbox"/>	<input type="checkbox"/>
Unsuitable living conditions	<input type="checkbox"/>	<input type="checkbox"/>	<input type="checkbox"/>	<input type="checkbox"/>
Had to move:	<input type="checkbox"/>	<input type="checkbox"/>	<input type="checkbox"/>	<input type="checkbox"/>
Evicted	<input type="checkbox"/>	<input type="checkbox"/>	<input type="checkbox"/>	<input type="checkbox"/>
Refused planning permission	<input type="checkbox"/>	<input type="checkbox"/>	<input type="checkbox"/>	<input type="checkbox"/>
Offered other accommodation	<input type="checkbox"/>	<input type="checkbox"/>	<input type="checkbox"/>	<input type="checkbox"/>
Looking for employment	<input type="checkbox"/>	<input type="checkbox"/>	<input type="checkbox"/>	<input type="checkbox"/>
Refused	<input type="checkbox"/>	<input type="checkbox"/>	<input type="checkbox"/>	<input type="checkbox"/>

**Q12 Where have you moved from?**

Respondent 1.....	<input type="text"/>
Respondent 2.....	<input type="text"/>
Respondent 3.....	<input type="text"/>
Respondent 4.....	<input type="text"/>

**Q13 Where would you prefer to live?**

	Respon dent 1	Respon dent 2	Respon dent 3	Respon dent 4
Housing Association	<input type="checkbox"/>	<input type="checkbox"/>	<input type="checkbox"/>	<input type="checkbox"/>
Grouped accommodation on permanent pitches	<input type="checkbox"/>	<input type="checkbox"/>	<input type="checkbox"/>	<input type="checkbox"/>
Service site	<input type="checkbox"/>	<input type="checkbox"/>	<input type="checkbox"/>	<input type="checkbox"/>
Privately owned site	<input type="checkbox"/>	<input type="checkbox"/>	<input type="checkbox"/>	<input type="checkbox"/>
Privately rented site	<input type="checkbox"/>	<input type="checkbox"/>	<input type="checkbox"/>	<input type="checkbox"/>
A series of transit sites in the district	<input type="checkbox"/>	<input type="checkbox"/>	<input type="checkbox"/>	<input type="checkbox"/>
Mobile homes with a small group of other travellers	<input type="checkbox"/>	<input type="checkbox"/>	<input type="checkbox"/>	<input type="checkbox"/>
Remain at side of road	<input type="checkbox"/>	<input type="checkbox"/>	<input type="checkbox"/>	<input type="checkbox"/>
Refused	<input type="checkbox"/>	<input type="checkbox"/>	<input type="checkbox"/>	<input type="checkbox"/>

**Q14 Do you or your family have a local connection to Basingstoke and Deane?**

	Respon dent 1	Respon dent 2	Respon dent 3	Respon dent 4
Yes	<input type="checkbox"/>	<input type="checkbox"/>	<input type="checkbox"/>	<input type="checkbox"/>
No	<input type="checkbox"/>	<input type="checkbox"/>	<input type="checkbox"/>	<input type="checkbox"/>
Refused	<input type="checkbox"/>	<input type="checkbox"/>	<input type="checkbox"/>	<input type="checkbox"/>

**Q15 If yes, please give details:**

Respondent 1 .....

Respondent 2 .....

Respondent 3 .....

Respondent 4 .....

**Q16 Are you expecting to move in the next 5 years?**

	Respon dent 1	Respon dent 2	Respon dent 3	Respon dent 4
Yes	<input type="checkbox"/>	<input type="checkbox"/>	<input type="checkbox"/>	<input type="checkbox"/>
No	<input type="checkbox"/>	<input type="checkbox"/>	<input type="checkbox"/>	<input type="checkbox"/>
Wish to move but can't	<input type="checkbox"/>	<input type="checkbox"/>	<input type="checkbox"/>	<input type="checkbox"/>
Refused	<input type="checkbox"/>	<input type="checkbox"/>	<input type="checkbox"/>	<input type="checkbox"/>

**Q17 If you are expecting to move within the next 5 years, are you considering a:**

	Respon dent 1	Respon dent 2	Respon dent 3	Respon dent 4
Move within Basingstoke and Deane borough	<input type="checkbox"/>	<input type="checkbox"/>	<input type="checkbox"/>	<input type="checkbox"/>
Basingstoke Town	<input type="checkbox"/>	<input type="checkbox"/>	<input type="checkbox"/>	<input type="checkbox"/>
Overton	<input type="checkbox"/>	<input type="checkbox"/>	<input type="checkbox"/>	<input type="checkbox"/>
Whitchurch	<input type="checkbox"/>	<input type="checkbox"/>	<input type="checkbox"/>	<input type="checkbox"/>
Kingsclere	<input type="checkbox"/>	<input type="checkbox"/>	<input type="checkbox"/>	<input type="checkbox"/>
Bramley	<input type="checkbox"/>	<input type="checkbox"/>	<input type="checkbox"/>	<input type="checkbox"/>
Tadley	<input type="checkbox"/>	<input type="checkbox"/>	<input type="checkbox"/>	<input type="checkbox"/>
Refused	<input type="checkbox"/>	<input type="checkbox"/>	<input type="checkbox"/>	<input type="checkbox"/>

**Q18 If other, please specify:**

Respondent 1 .....

Respondent 2 .....

Respondent 3 .....

Respondent 4 .....

**Q19 If you are expecting a move within the next 5 years, are you considering a move outside the borough?**

Respondent 1 .....

Respondent 2 .....

Respondent 3 .....

Respondent 4 .....

**Q20 Are any of your children likely to need their own home in the next 5 years?**

	Respon dent 1	Respon dent 2	Respon dent 3	Respon dent 4
Yes	<input type="checkbox"/>	<input type="checkbox"/>	<input type="checkbox"/>	<input type="checkbox"/>
Female (how many?)	<input type="checkbox"/>	<input type="checkbox"/>	<input type="checkbox"/>	<input type="checkbox"/>
Male (how many?)	<input type="checkbox"/>	<input type="checkbox"/>	<input type="checkbox"/>	<input type="checkbox"/>
No	<input type="checkbox"/>	<input type="checkbox"/>	<input type="checkbox"/>	<input type="checkbox"/>
Refused	<input type="checkbox"/>	<input type="checkbox"/>	<input type="checkbox"/>	<input type="checkbox"/>

**Q21 When are they likely to need their own home?**

Respondent 1 .....

Respondent 2 .....

Respondent 3 .....

Respondent 4 .....

**Q22 If moving outside of Basingstoke and Deane, please indicate why you are moving:**

	Respon dent 1	Respon dent 2	Respon dent 3	Respon dent 4
Lack of affordable housing	<input type="checkbox"/>	<input type="checkbox"/>	<input type="checkbox"/>	<input type="checkbox"/>
To start a family	<input type="checkbox"/>	<input type="checkbox"/>	<input type="checkbox"/>	<input type="checkbox"/>
Intimidation/harassment	<input type="checkbox"/>	<input type="checkbox"/>	<input type="checkbox"/>	<input type="checkbox"/>
Better access to work	<input type="checkbox"/>	<input type="checkbox"/>	<input type="checkbox"/>	<input type="checkbox"/>
Better access to education facilities	<input type="checkbox"/>	<input type="checkbox"/>	<input type="checkbox"/>	<input type="checkbox"/>
Have to move on:	<input type="checkbox"/>	<input type="checkbox"/>	<input type="checkbox"/>	<input type="checkbox"/>
Eviction	<input type="checkbox"/>	<input type="checkbox"/>	<input type="checkbox"/>	<input type="checkbox"/>
Planning permission refused	<input type="checkbox"/>	<input type="checkbox"/>	<input type="checkbox"/>	<input type="checkbox"/>
Safety/fear of crime	<input type="checkbox"/>	<input type="checkbox"/>	<input type="checkbox"/>	<input type="checkbox"/>
Refused	<input type="checkbox"/>	<input type="checkbox"/>	<input type="checkbox"/>	<input type="checkbox"/>

**Q23 Do you pursue a nomadic way of life?**

	Respon dent 1	Respon dent 2	Respon dent 3	Respon dent 4
Yes	<input type="checkbox"/>	<input type="checkbox"/>	<input type="checkbox"/>	<input type="checkbox"/>
No	<input type="checkbox"/>	<input type="checkbox"/>	<input type="checkbox"/>	<input type="checkbox"/>
Refused	<input type="checkbox"/>	<input type="checkbox"/>	<input type="checkbox"/>	<input type="checkbox"/>

**Q24 How often do you travel?**

	Respon dent 1	Respon dent 2	Respon dent 3	Respon dent 4
All the time	<input type="checkbox"/>	<input type="checkbox"/>	<input type="checkbox"/>	<input type="checkbox"/>
Once a year	<input type="checkbox"/>	<input type="checkbox"/>	<input type="checkbox"/>	<input type="checkbox"/>
Twice a year	<input type="checkbox"/>	<input type="checkbox"/>	<input type="checkbox"/>	<input type="checkbox"/>
3 times a year	<input type="checkbox"/>	<input type="checkbox"/>	<input type="checkbox"/>	<input type="checkbox"/>
4 times a year	<input type="checkbox"/>	<input type="checkbox"/>	<input type="checkbox"/>	<input type="checkbox"/>
5+ times a year	<input type="checkbox"/>	<input type="checkbox"/>	<input type="checkbox"/>	<input type="checkbox"/>
Other	<input type="checkbox"/>	<input type="checkbox"/>	<input type="checkbox"/>	<input type="checkbox"/>
Refused	<input type="checkbox"/>	<input type="checkbox"/>	<input type="checkbox"/>	<input type="checkbox"/>

**Q25 Are you planning to travel in the next 6 months?**

	Respon dent 1	Respon dent 2	Respon dent 3	Respon dent 4
Yes	<input type="checkbox"/>	<input type="checkbox"/>	<input type="checkbox"/>	<input type="checkbox"/>
No	<input type="checkbox"/>	<input type="checkbox"/>	<input type="checkbox"/>	<input type="checkbox"/>
Refused	<input type="checkbox"/>	<input type="checkbox"/>	<input type="checkbox"/>	<input type="checkbox"/>

**Q26 Where do you normally travel to?**

	Respon dent 1	Respon dent 2	Respon dent 3	Respon dent 4
Other sites within the borough	<input type="checkbox"/>	<input type="checkbox"/>	<input type="checkbox"/>	<input type="checkbox"/>
Other sites within Hampshire	<input type="checkbox"/>	<input type="checkbox"/>	<input type="checkbox"/>	<input type="checkbox"/>
Other sites within the South East	<input type="checkbox"/>	<input type="checkbox"/>	<input type="checkbox"/>	<input type="checkbox"/>
Random locations with no specific destination	<input type="checkbox"/>	<input type="checkbox"/>	<input type="checkbox"/>	<input type="checkbox"/>
One specific destination	<input type="checkbox"/>	<input type="checkbox"/>	<input type="checkbox"/>	<input type="checkbox"/>
A set pattern of locations within a certain area	<input type="checkbox"/>	<input type="checkbox"/>	<input type="checkbox"/>	<input type="checkbox"/>
Refused	<input type="checkbox"/>	<input type="checkbox"/>	<input type="checkbox"/>	<input type="checkbox"/>
Other	<input type="checkbox"/>	<input type="checkbox"/>	<input type="checkbox"/>	<input type="checkbox"/>

**Q27 Who do you travel with?**

	Respon dent 1	Respon dent 2	Respon dent 3	Respon dent 4
On my own	<input type="checkbox"/>	<input type="checkbox"/>	<input type="checkbox"/>	<input type="checkbox"/>
As a family group	<input type="checkbox"/>	<input type="checkbox"/>	<input type="checkbox"/>	<input type="checkbox"/>
Immediate friends and family	<input type="checkbox"/>	<input type="checkbox"/>	<input type="checkbox"/>	<input type="checkbox"/>
A group of travellers unrelated to me	<input type="checkbox"/>	<input type="checkbox"/>	<input type="checkbox"/>	<input type="checkbox"/>
Other	<input type="checkbox"/>	<input type="checkbox"/>	<input type="checkbox"/>	<input type="checkbox"/>
Refused	<input type="checkbox"/>	<input type="checkbox"/>	<input type="checkbox"/>	<input type="checkbox"/>

**Q28 What is your preferred time of year to travel?**

	Respon dent 1	Respon dent 2	Respon dent 3	Respon dent 4
Spring	<input type="checkbox"/>	<input type="checkbox"/>	<input type="checkbox"/>	<input type="checkbox"/>
Summer	<input type="checkbox"/>	<input type="checkbox"/>	<input type="checkbox"/>	<input type="checkbox"/>
Autumn	<input type="checkbox"/>	<input type="checkbox"/>	<input type="checkbox"/>	<input type="checkbox"/>
Winter	<input type="checkbox"/>	<input type="checkbox"/>	<input type="checkbox"/>	<input type="checkbox"/>
All year round	<input type="checkbox"/>	<input type="checkbox"/>	<input type="checkbox"/>	<input type="checkbox"/>
No preference	<input type="checkbox"/>	<input type="checkbox"/>	<input type="checkbox"/>	<input type="checkbox"/>
Refused	<input type="checkbox"/>	<input type="checkbox"/>	<input type="checkbox"/>	<input type="checkbox"/>

**Q29 Do you travel:**

	Respon dent 1	Respon dent 2	Respon dent 3	Respon dent 4
To find work	<input type="checkbox"/>	<input type="checkbox"/>	<input type="checkbox"/>	<input type="checkbox"/>
To visit friends/family	<input type="checkbox"/>	<input type="checkbox"/>	<input type="checkbox"/>	<input type="checkbox"/>
To visit specific events	<input type="checkbox"/>	<input type="checkbox"/>	<input type="checkbox"/>	<input type="checkbox"/>
For family reasons	<input type="checkbox"/>	<input type="checkbox"/>	<input type="checkbox"/>	<input type="checkbox"/>
Other reasons	<input type="checkbox"/>	<input type="checkbox"/>	<input type="checkbox"/>	<input type="checkbox"/>
Refused	<input type="checkbox"/>	<input type="checkbox"/>	<input type="checkbox"/>	<input type="checkbox"/>

**Q30 Do you have any children in education?**

	<i>Respon dent 1</i>	<i>Respon dent 2</i>	<i>Respon dent 3</i>	<i>Respon dent 4</i>
Yes	<input type="checkbox"/>	<input type="checkbox"/>	<input type="checkbox"/>	<input type="checkbox"/>
No	<input type="checkbox"/>	<input type="checkbox"/>	<input type="checkbox"/>	<input type="checkbox"/>
Refused	<input type="checkbox"/>	<input type="checkbox"/>	<input type="checkbox"/>	<input type="checkbox"/>

**Q31 How many children do you have in education?**

	<i>Respon dent 1</i>	<i>Respon dent 2</i>	<i>Respon dent 3</i>	<i>Respon dent 4</i>
1	<input type="checkbox"/>	<input type="checkbox"/>	<input type="checkbox"/>	<input type="checkbox"/>
2	<input type="checkbox"/>	<input type="checkbox"/>	<input type="checkbox"/>	<input type="checkbox"/>
3	<input type="checkbox"/>	<input type="checkbox"/>	<input type="checkbox"/>	<input type="checkbox"/>
4	<input type="checkbox"/>	<input type="checkbox"/>	<input type="checkbox"/>	<input type="checkbox"/>
5	<input type="checkbox"/>	<input type="checkbox"/>	<input type="checkbox"/>	<input type="checkbox"/>
5+	<input type="checkbox"/>	<input type="checkbox"/>	<input type="checkbox"/>	<input type="checkbox"/>
Refused	<input type="checkbox"/>	<input type="checkbox"/>	<input type="checkbox"/>	<input type="checkbox"/>

**Q32 What type of school do they attend?**

	<i>Respon dent 1</i>	<i>Respon dent 2</i>	<i>Respon dent 3</i>	<i>Respon dent 4</i>
Infants	<input type="checkbox"/>	<input type="checkbox"/>	<input type="checkbox"/>	<input type="checkbox"/>
Primary	<input type="checkbox"/>	<input type="checkbox"/>	<input type="checkbox"/>	<input type="checkbox"/>
Secondary	<input type="checkbox"/>	<input type="checkbox"/>	<input type="checkbox"/>	<input type="checkbox"/>
College	<input type="checkbox"/>	<input type="checkbox"/>	<input type="checkbox"/>	<input type="checkbox"/>
University	<input type="checkbox"/>	<input type="checkbox"/>	<input type="checkbox"/>	<input type="checkbox"/>
Refused	<input type="checkbox"/>	<input type="checkbox"/>	<input type="checkbox"/>	<input type="checkbox"/>

**Q33 Do any of your children have special educational needs?**

	<i>Respon dent 1</i>	<i>Respon dent 2</i>	<i>Respon dent 3</i>	<i>Respon dent 4</i>
Yes	<input type="checkbox"/>	<input type="checkbox"/>	<input type="checkbox"/>	<input type="checkbox"/>
No	<input type="checkbox"/>	<input type="checkbox"/>	<input type="checkbox"/>	<input type="checkbox"/>
Refused	<input type="checkbox"/>	<input type="checkbox"/>	<input type="checkbox"/>	<input type="checkbox"/>

# Gypsies, Travellers and Travelling Showpeople living in bricks and mortar accommodation

The Council is carrying out a survey to help us to work out how many sites will be needed for Gypsies, Travellers and Travelling Showpeople over the next 5 years. To do this we need you to answer some questions about your family, where you live and how often you travel. The information you give us will be treated confidentially and no one will be able to tell you took part. Your answers will help us to make sure we plan for the future of the gypsy and traveller community as well as the settled community.

**Q1 Address/location of respondents house:**

**Q2 Number of failed interview attempts/dates:**

**Q3 Ethnicity of Respondent:**

Romany

Irish Traveller

Traveller

Travelling Showperson

Other, please specify:

**Q4 Gender**

Male .....

Female .....

**Q5 Please give details of the number of people currently living within your home, including you (no names required, just number in each category)**

Adults (aged over 16).....

Children (aged under 16)...

Elderly relatives or friends .

Refused to answer question .....

**Q6 How many couples are currently living in your home?**

Number of couples? .....

Refused to answer question .....

**Q7 How many bedrooms does your home have?**

Number of bedrooms ?.....

Refused to answer question .....

**Q8 Is there enough space for all the occupants in your homes?**

Yes.....

No .....

Refused to answer question .....

**Q9 Do you need any more bedrooms? If so how many?**

Number of additional bedrooms required .....

Does not apply.....

Refused to answer question.....

**Q10 How long has the household lived at this current address?**

- Less than 1 month .....
- Between 1 month and 6 months .....
- Between 6 months and 1 year .....
- Between 1 year and 5 years .....
- More than 5 years .....
- Refused to answer question .....

**Q11 Is the house owned or rented?**

- Owned .....
- Rented from a Housing Association .....
- Rented from a private landlord .....
- Other .....
- Refused to specify .....

**Q12 Details of previous home of the household**

- House or flat .....
- Unauthorised site .....
- Authorised site .....
- Local Authority site .....
- Rented site .....
- Transit site .....
- Self-owned site without planning permission .....
- Self-owned site with planning permission .....
- Refused to answer question .....

**Q13 Length of time at previous home of household**

- Less than 1 month .....
- Between 1 and 6 months .....
- Between 6 months and 1 year .....
- Between 1 year and 5 years .....
- More than 5 years .....
- Refused to answer question .....

**Q14 Why did the household leave the previous home?**

- Travelling .....
- Unsuitable location .....
- Unsuitable living conditions .....
- Overcrowded .....
- Evicted .....
- Refused Planning permission .....
- Offered other accommodation .....
- Looking for employment .....
- Refused to answer question .....

**Q15 Where did the household move from?**

- Location .....
- Refused to answer question .....

**Q16 Is the household happy with the type of home they live in?**

- Yes the family is happy .....
- No the family would rather live in other accommodation .....

**Q17 If no, where would the family rather live?**

- Self-owned site with planning permission .....
- Self-owned site without planning permission .....
- Gypsy/traveller owned site .....
- Local Authority site .....
- Other landlord site .....
- Unauthorised site .....
- Self-owned flat or house .....
- Housing Association rented house .....
- Private landlord rented house .....
- Other .....
- Refused to answer question .....

**Q18 If not happy, does the household require this new accommodation within the next 5 years?**

- Yes .....
- No .....

**Q19 If the household would like to move from their current location, where would they like to move to?**

- Elsewhere in Basingstoke and Deane Borough Council (please specify) ...
- Outside Basingstoke and Deane Borough Council (please specify) .....

**Q20 Has the household applied for planning permission for site accommodation in the last 5 years?**

- Yes, please specify location .....
- No .....

**Q21 Will any of the other people in your household need and/or are likely to move to their own separate home within the next 5 years? (e.g. son/daughter)**

- Yes .....
- No .....

**Q22 How many new separate homes will be needed?**

Number of homes.....

Not applicable.....

**Q23 What type of accommodation do you think they would like to live in?**

Self-owned site with planning permission .....

Self-owned site without planning permission ....

Gypsy/Traveller owned site.....

Local Authority site.....

Other landlord site.....

Unauthorised site.....

Self owned house/flat.....

Housing Association rented house .....

Private landlord rented house.....

Other.....

Refused to answer question .....

**Q24 Where do you think they would like to live?**

Within Basingstoke and Deane Borough (please specify) .....

Outside Basingstoke and Deane Borough (please specify) .....

**Q25 How many times have you travelled in the past 12 months?**

Number of times.....

Refused to answer question.....

**Q26 What time of year do you travel?**

Spring.....

Summer .....

Autumn.....

Winter.....

**Q27 Is this your usual travel pattern?**

Yes.....

No, please explain .....

.....

**Q28 Who do you travel with?**

By yourself.....

Your immediate family .....

Friends .....

Different every time.....

Other.....

N/A.....

Refused to answer question .....

**Q29 How many tourers do you normally travel with?**

Number of tourers.....

N/A.....

Refused to answer question.....

**Q30 In the last five years where did you travel to the most? (specify towns/villages)**

**Q31 If you do not travel any longer, what are the main reasons for this? (please explain)**

**Q32 Do you know anyone who has a gypsy, traveller, showperson background who currently lives in bricks and mortar accommodation in Basingstoke and Deane and would be willing to complete this questionnaire?**

**Q33 Further Comments**

**Basingstoke and Deane Borough Council  
Gypsy and Traveller Accommodation Assessment**

**Gypsies and Travellers in conventional Housing**

**Q1.** How many Gypsies and Travellers do you estimate live in the housing you provide in Basingstoke and Deane Borough?

<b>0 families</b>		<b>6 -10 families</b>	
<b>1 family</b>		<b>11 – 15 families</b>	
<b>2 families</b>		<b>16 - 20 families</b>	
<b>3 families</b>		<b>21 -15 families</b>	
<b>4 families</b>		<b>25+ families</b>	
<b>5 families</b>			

**Q2.** Do you identify Gypsies and Travellers in ethnic records and monitoring of housing applications and/or allocations?

<b>Yes</b>	
<b>No</b>	

**Q3.** Please provide as much accurate information as possible in the tables below:

<b>Number of Gypsies and Travellers currently registered for housing</b>	
<b>Number of Gypsies and Traveller housed in 2009/10</b>	
<b>2008/9</b>	
<b>2007/8</b>	

**Q4.** How has the number of Gypsies and Travellers moving into your accommodation changed over the past 5 years?

<b>Remained broadly the same</b>	
<b>Increased</b>	
<b>Decreased</b>	
<b>Not known</b>	

Thank you for your assistance in completing this questionnaire. Please send all completed questionnaires to the address below or return by email by 16th September 2011.

Anna Morecombe  
Basingstoke and Deane Borough Council  
Civic Offices  
London Road  
Basingstoke, RG21 4AH

[anna.morecombe@basingstoke.gov.uk](mailto:anna.morecombe@basingstoke.gov.uk)

## 11.0 References

DCA. (2007). *Hampshire and Isle of Wight Gypsy & Traveller Accommodation Assessment*. Winchester: Hampshire County Council.

[www.planningportal.gov.uk/planning/appeals/planninginspectorate/regionalstrategies](http://www.planningportal.gov.uk/planning/appeals/planninginspectorate/regionalstrategies)  
DCLG. (2007). *Gypsy and Traveller Accommodation Needs Assessments: Guidance*. West Yorkshire: Wetherby.

DCLG (2008) *Designing Gypsy and Traveller Sites Good Practice Guide*. London: DCLG

DCLG. (2011, 11 01). *Examination of the partial review of the South East Regional Strategy on Provisions for Gypsies, Travellers and Travelling Showpeople*. Retrieved 11 01, 2011, from The Planning Portal:

DCLG. (2011). *Planning for Traveller Sites: Consultation*. London: DCLG.

DCLG (2012) *National Planning Policy Framework*. London: DCLG

DCLG (2012) *Planning Policy for Traveller Sites*. London: DCLG

ODPM. (2006). *Circular 01/06: Planning for Gypsy and Traveller Caravan Sites*. London: ODPM.

ODPM. (2007). *Circular 04/07: Planning for Travelling Showpeople*. London: ODPM.

## 12.0 Glossary

### **Authorised Site**

A site with planning permission for use by Gypsies, Travellers or Showpeople. They can either be privately owned and rented or socially rented (owned by a council or registered social landlord).

### **Bricks and Mortar Accommodation**

Permanent housing of the settled community

### **Household**

A group of related people who live and/or travel together. It is assumed that each family unit would require one pitch to live on. It is used as the basis for assessing accommodation requirements.

### **Overcrowded**

Overcrowded means where family numbers have grown to the extent that there is now insufficient space for the family within its caravan accommodation and insufficient space on the pitch or site for a further caravan.

### **Pitch**

A site able to accommodate at least one mobile home and one touring caravan, generally for a single household.

### **Site Accommodation**

Accommodation which is not bricks and mortar; can include authorised site and unauthorised encampments/developments.

### **Suppressed Household**

Households who are unable to set up separate family units and who are unable to access a place on an authorised site, or obtain or afford land to develop one.

### **Temporary Stopping Place**

A place to accommodate intermittent needs for site accommodation. They are generally not occupied all year around but may be made available at times of increased demand; less formal than a transit site.

### **Transit Site**

A site intended for short-term use by households in transit. The site is normally permanent, while its residents are temporary and a maximum period of stay is usually imposed.

## **Travellers**

For the purpose of this report, the term includes Gypsies, Travellers and Travelling Showpeople.

## **Unauthorised development**

A site owned and occupied by Gypsies or Travellers, but without the benefit of planning permission to reside on the land.

## **Unauthorised encampment**

An area where Gypsy or Travellers occupy land without planning permission or permission of the landowner.

## **Yard**

A site occupied by Travelling Showpeople, includes space of residential living and storage of equipment.

©Basingstoke and Deane Borough Council July 2012

[www.basingstoke.gov.uk](http://www.basingstoke.gov.uk)

[customer.services@basingstoke.gov.uk](mailto:customer.services@basingstoke.gov.uk) 01256 844844

Follow us on Twitter: [twitter.com/BasingstokeGov](https://twitter.com/BasingstokeGov)

**For a large print copy of this  
leaflet please call 01256 844844**



*Basingstoke  
and Deane*