



West Berkshire

Wokingham

Wiltshire

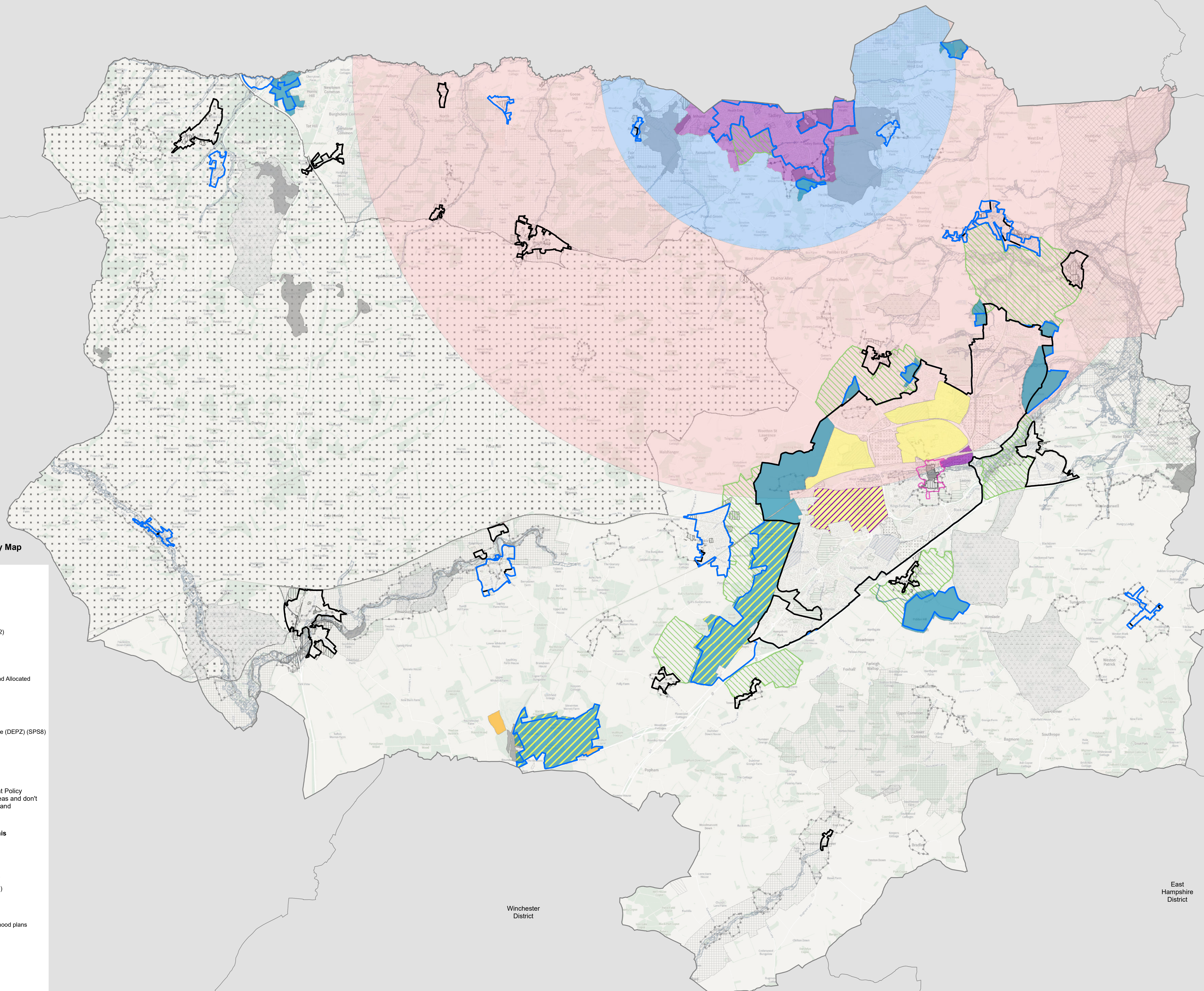
Wiltshire

Wiltshire

Hart District

Winchester District

East Hampshire District



### Basingstoke and Deane: Local Plan Policy Map (2025 Regulation 18)

- Key**
- Borough Boundary
  - Neighbouring Authority
  - Existing Settlement Policy Boundaries (SPS1)
  - Proposed Settlement Policy Boundaries (SPS1)
  - Initial Priority Areas for Neighbourhood Renewal (SPS2)
  - Buckskin and South Ham Masterplan Area (SPS2a)
  - Basingstoke Town Centre Masterplan Area (SPS3)
  - Proposed Housing-Led Allocations (SPS5)
  - Proposed Housing-Led-Allocations with Mixed Uses and Allocated Employment Floorspace (SPS5)
  - Popham Garden Village Solar Farm (SPS5.8)
  - Atomic Weapons Establishment (AWE)
  - AWE: 12km Zone (SPS8)
  - AWE: Aldermaston: Detailed Emergency Planning Zone (DEP2) (SPS8)
  - AWE: Aldermaston: Outer Zone (OCZ) 5km (SPS8)
  - AWE: Aldermaston: Site Centre (SPS8)
  - Basing View (SPS9)
  - Strategic Gaps (ENV2)

To Note: Allocation boundaries can go beyond Settlement Policy Boundaries (SPBs) which generally delineate built up areas and don't include some areas such as open space, buffer planting and recreation grounds.

### Draft LP policies not being consulted on as part of this Regulation 18 consultation (2025)

- Valued Landscapes (ENV1)
- North Wessex Downs National Landscape (ENV1)
- 5Km Mitigation Zone Thames Basin Heath SPA (ENV3)
- 7Km Mitigation Zone Thames Basin Heath SPA (ENV3)
- Sites of Special Scientific Interest (ENV6)
- Local Green Space (ENV8)
- Local Green Space (ENV8) Designated via neighbourhood plans
- Critical Drainage Areas (ENV9)
- Flood Zones 2 and 3 (ENV10)
- Strategic Employment Area (EMP1 and EMP2)
- Primary Shopping Areas (EMP3)
- Primary Shopping Frontage (EMP3)
- Secondary Shopping Frontage (EMP3)
- Conservation Area (DES6)
- Scheduled Monuments (DES6)
- Historic Parks and Gardens (DES6)